

SWIT®

SWIT®
SWIT ELECTRONICS CO., LTD.
<http://www.swit.cc>

2014

SWIT Autumn Product Catalogue

Professional Design, Perfect Quality

SWIT Electronics Co., Ltd.

© 2014 SWIT Electronics Co., Ltd. All rights reserved.

Features, specifications and appearances are subject to change without notice.

All non-metric weights and measures are approximate.

SWIT is the registered trademark of SWIT Electronics Co., Ltd.

VER:2014-08-01(E)

SWIT Electronics Co., Ltd.
Add:10 Hengtong Road, Xin'gang,
Nanjing Economic and Technological
Development Zone, Nanjing 210038
P.R.China
Tel: +86-25-85805753
Fax: +86-25-85805296
Email: contact@swit.cc

Distributed by:



Monitor



Wireless HD



HD Converter



Battery



Charger



LED Light

GLOBAL PARTNER

Quality, Reliability, Creativity, Compatibility



SWIT Electronics Co., Ltd, a high-tech enterprise, specializes in developing and manufacturing products for the broadcast industry. SWIT occupied an area of 16660 square meters, located in Nanjing National Level Economic and Technological Development Zone.

SWIT has gained great reputation worldwide for its outstanding and innovative products over the years. This compliment goes back to the high standard quality control that the company has put in place way back from the beginning of the business.

SWIT has a wide variety of products. It ranges from broadcast LCD monitor, Li-ion battery, charger, adapter, camera light, video converter, camera bag, etc. SWIT has more than 100 products to offer together with about 20 patents rights. **SWIT** brand has been registered in more than 60 countries worldwide.

Quality, Reliability, Creativity and Compatibility are what you can find in **SWIT**, the trusted brand and choice.



P₀₇

S-1092H
8.9-inch Full HD 3GSDI&HDMI LCD Monitor



P₁₉

M-1072A
Audio Loudness monitor



P₁₄

S-1161H
15.6-inch Full HD Studio LCD monitor



P₃₂

S-8180A/S
220Wh High Load Li-ion Battery
Max 150W/12A output

High Load



P₄₄

S-2120
LED Panel Light

P₂₃

S-4903T / S-4903R
200m SDI Wireless Transmission System



S-4903T
Transmitter

S-4903R
Receiver



S-4913T
Transmitter

S-4913R
Receiver

P₂₄

S-4913T / S-4913R
200m HDMI Wireless Transmission System



P₄₆

S-7005A/S
V-mount to Gold mount Battery Adapter
Gold mount to V-mount Battery Adapter



P₄₃

S-2110
LED Panel Light



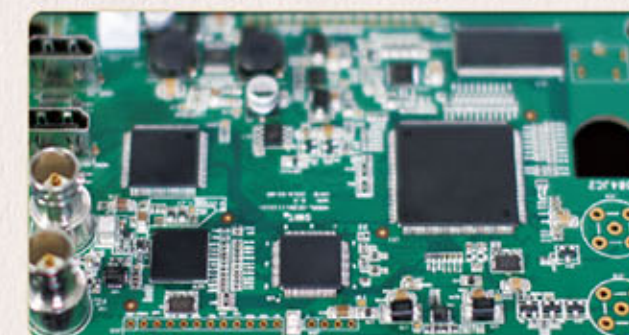
Advanced LCD Panels

SWIT monitors adopt high performance LCD panels, with accurate color reproduction, high contrast level and wide viewing angle of both up-down and left-right.



Compact main board

The main board of monitor is integrated designed. The chip, controlling circuit, input/output interfaces are arranged in an entire board, which ensures the stability and safety of the monitor. Meanwhile, the compact board can reduce monitor thickness, and help the cooling of the whole unit.



Multiple input video formats

Support SDI (up to 3Gb/s), HDMI, Composite video input and loop through output, and HDMI converted to SDI output.



Multiple power sources

You can use AC-DC adapter, V-mount/Gold mount batteries, various DV batteries, special compact battery to power the monitors. The DV battery mount is snap-on designed, quick released and interchangeable with each other. There're following DV mount types for selection:

Mount type	Compatible SWIT battery	Original battery
F	S-8972, S-8970, S-8770	SONY NP-F970/770
U	S-8U62, S-8U63	SONY BP-U60/U30
P	S-8D62	Panasonic DS4S/D28S
B	S-88G6	Panasonic VW-VBG6
J	S-8428	JVC BN-V428U
V	S-8823	JVC BN-VF823
I	S-8150	JVC SSL-JVC50
C	S-8845, S-8945	Canon BP-94S/970G
E	S-8PE6	Canon DSLR LP-E6



Original rear panel

V-mount option



Snap on DV mount option

Gold-mount option



Digital embedded audio process

Support output of SDI and HDMI embedded audio via headphone or speaker, and display up to 16-channel SDI embedded audio meter display, 2-channel HDMI embedded audio meter display.



16-ch SDI embedded audio meter

2-ch HDMI embedded audio meter



SDI timecode display

Under SDI input, the F series monitors can display the embedded SMPTE timecode (VITC1, VITC2, or LTC), which is used extensively for synchronization, and for logging and identifying material in recorded media.



Time code

Professional video analysis function

Besides the image composition, it's more important for the professional broadcast cameramen to check the video quality, including brightness level, color distribution, in focus or not, audio level etc.

SWIT monitors have the self-developed software technology, and offer the full range of professional video analysis functions, which helps cameramen to control the recording quality by the visualized patterns and accurate values.



(A) Waveform Y, Cb, Cr, R, G, B and full scale display

The waveform is a pattern to display and measure the brightness and its distribution (in false color) of every column of input video, including Y/Cb/Cr parade, R/G/B parade, and full scale display for each of them.



Waveform- Y/Cb/Cr parade



Waveform- R/G/B parade



Waveform- Full scale



(B) Vector scope

The vector scope pattern is to visualize the chrominance of input video signal by the distribution of color in the image on a circular scale. It represents saturation as distance from the center of the circle, and hue as the angle, in standard position, around it.

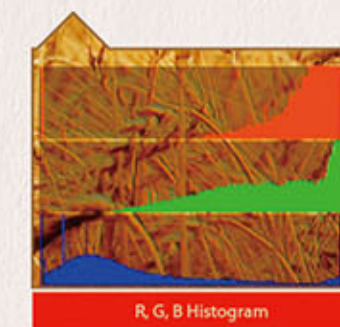


Vector scope



(C) R, G, B Histogram, with overexposure warning

The histogram is a bar graph that shows the distribution of Luma values in the image, which is R, G, B parade display, and will turn yellow at the right end if the channel is overexposed.



R, G, B Histogram



(D) Zoom-in and peaking focus assist

The peaking focus assist function is to mark the sharpest edges of the image with red or blue color, for cameramen to check if the subjects are focused. You can also zoom in the video to see the edge lines more clearly. It is the real-time zoom-in which is available when previewing, recording or playing back.



Peaking focus assist RED / BLUE switch



Peaking while Zoom-in



(E) False color

The false color is used to aid in the setting of camera exposure. Under false color mode, there's a false color chart on the bottom of screen for reference. The overexposed subjects (above 101 IRE) on the monitor will display in RED, and the underexposed subjects will display in BLUE. For correct exposed subjects, it will display in green and pink.



(F) Zebra stripes

Like most professional cameras have, the zebra stripes are a warning to the over exposed parts of the image. When luminance value exceeds 90%, it is considered overexposed and displayed the moving warning lines onto the over exposed parts.



(G) Blue Only

Blue Only is also an assistant function to adjust camera color settings. Under the blue only mode, only the blue pixels are used to generate the image, because hue and saturation can be adjusted more quickly and accurately in this environment.



(H) Internal colorbar

Without video input, the monitor can self-generate the 100% colorbar for color calibration.



TALLY light

The on-camera monitors have both front and rear TALLY lights, to give "live" signals to people in front of the camera, as well as the camera operator behind. The TALLY lights have 3 colors and are controlled via DB9 port.



Specially designed for EFP system

- S-1071F(EFP), S-1071H(EFP)

(A) With picture-in-picture display mode, the EFP series monitors are the solution for cameramen to check the switcher returned video during local camera recording. We design the picture-in-picture mode: overlay the switcher returned video as a window onto the local camera signal monitoring. Both SDI and CVBS returned signal are accepted, and the window can be set to each of the 4 corners or center of the screen, and size is adjustable.



(B) One-Cable transmission

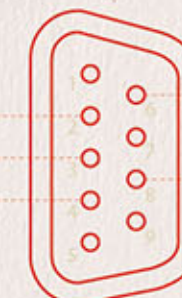
An easy, clean cable connection is important to the EFP system. Our EFP series monitors provide a multifunctional DB9 interface, which supports power input, CVBS input, picture-in-picture switch on/off and TALLY light controlling. In your build-up EFP system, you can use only one DB9 cable to input everything, instead of the complex cable work.



PIP: Picture-in-picture on/off
G: Green Tally signal
R: Red Tally signal

12V_IN: DC power input

CVBS_IN: Switcher returned CVBS input





S-1092H 8.9-inch Full HD 3GSDI&HDMI LCD Monitor

- ◆ 8.9" LCD, 1920x1200 resolution, 800:1 contrast, 170°(H)/170°(V) viewing angle
- ◆ Applied LCD protective glass
- ◆ 3G/HD/SD-SDI, HDMI, CVBS, input and loop through output
- ◆ Under SDI or HDMI input, Pic-in-Pic display another channel of CVBS
- ◆ Under CVBS input, Pic-in-Pic display another channel of SDI or HDMI
- ◆ Peaking focus assist (red/blue switch)
- ◆ 2-ch SDI/HDMI embedded audio meter display
- ◆ SDI timecode display
- ◆ Underscan / Overscan, safe area
- ◆ Marker: 4:3, 13:9, 14:9, 15:9, 1.85:1, 2.35:1
- ◆ Blue only, Zebra (SDI&HDMI)
- ◆ Front & rear TALLY light
- ◆ V-mount, Gold mount or snap-on DV mount: F/P/J/C/U/E/B/V/I



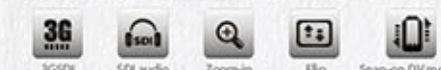
S-1090F 9-inch HDSDI&HDMI Waveform LCD Monitor

- ◆ 9" LCD, 1280x800 resolution, 700:1 contrast
- ◆ Applied LCD protective glass
- ◆ HD/SD-SDI & HDMI input and loop through output, and CVBS input
- ◆ HDMI converted to HD/SD-SDI output
- ◆ Waveform - Y/Cb/Cr, R/G/B, and full scale (SDI&HDMI)
- ◆ Vector scope (SDI&HDMI)
- ◆ Histogram - R/G/B (SDI&HDMI)
- ◆ SDI 16-ch / HDMI 2-ch embedded audio meter display
- ◆ SDI/HDMI embedded audio output via 3.5mm earphone or speaker
- ◆ SDI timecode display
- ◆ Peaking focus assist (SDI&HDMI)
- ◆ False color (SDI&HDMI)
- ◆ Zebra stripes (SDI&HDMI)
- ◆ Blue only (SDI&HDMI)
- ◆ Internal 100% colorbar (SDI&HDMI)
- ◆ Underscan / Overscan, safety mark
- ◆ Canon DSLR scale zoom-in
- ◆ Image flip
- ◆ Front & rear TALLY light
- ◆ V-mount, Gold mount or snap-on DV mount: F/P/J/C/U/E/B/V/I



S-1090H 9-inch 3GSDI&HDMI LCD Monitor

- ◆ 9" LCD, 1280x800 resolution, 700:1 contrast
- ◆ Applied LCD protective glass
- ◆ 3G/HD/SD-SDI, HDMI, CVBS, input and loop through output
- ◆ SDI/HDMI embedded audio output via 3.5mm earphone or speaker
- ◆ Underscan / Overscan, safety mark
- ◆ Canon DSLR scale zoom-in
- ◆ Image flip
- ◆ Front & rear TALLY light
- ◆ V-mount, Gold mount or snap-on DV mount: F/P/J/C/U/E/B/V/I



S-1090C 9-inch HDMI LCD Monitor

- ◆ 9" LCD, 1280x800 resolution, 700:1 contrast
- ◆ Applied LCD protective glass
- ◆ HDMI&CVBS input and loop through output
- ◆ Underscan / Overscan, safety mark
- ◆ Canon DSLR scale zoom-in
- ◆ Image flip
- ◆ Front & rear TALLY light
- ◆ V-mount, Gold mount or snap-on DV mount: F/P/J/C/U/E/B/V/I



Specifications:

	Model	S-1092H	S-1090F	S-1090H	S-1090C
Picture	LCD size	8.9-inch	9-inch	9-inch	9-inch
	Display area	191.52x119.70 mm	194x121mm	194x121mm	194x121mm
	Resolution	1920x1200	1280x800	1280x800	1280x800
	Aspect ratio	16:9 (4:3 adjustable)	16:9 (4:3 adjustable)	16:9 (4:3 adjustable)	16:9 (4:3 adjustable)
	Viewing angle	H/V: 170°/170°	140°H/120°V	140°H/120°V	140°H/120°V
	Brightness / Contrast	450cd/m ² , 800:1	250cd/m ² , 700:1	250cd/m ² , 700:1	250cd/m ² , 700:1
	Input	SDI	3G/HD/SD-SDI x2	HD/SD-SDI x2	3G/HD/SD-SDI x1
HDMI		HDMI x1	HDMI x1	HDMI x1	HDMI x1
CVBS		CVBS x1	CVBS x1	CVBS x1	CVBS x1
L/R stereo audio		3.5mm socket x1	—	L/R audio x1	L/R audio x1
SDI loop out		3G/HD/SD-SDI x1	HD/SD-SDI x2	3G/HD/SD-SDI x1	—
Output	HDMI loop out	HDMI x1	HDMI x1	HDMI x1	HDMI x1
	CVBS loop out	—	—	CVBS x1	CVBS x1
	HDMI converted to SDI out	—	HDMI to HD/SD-SDI x1	—	—
	Earphone socket	3.5mm earphone x1	3.5mm earphone x1	3.5mm earphone x1	3.5mm earphone x1
	Power consumption	< 18W	≤ 18W	≤ 16W	≤ 12W
General	Working voltage	DC/Battery 6.5-17V			
	Working environment	0°-+40°C temperature, 10%-90% humidity			
	Dimension	238x177x48mm	236x171x50mm	236x171x48mm	236x171x48mm
	Weight (main body)	1100g	1010g	970g	920g



S-1071F 7-inch HDSDI&HDMI Waveform LCD Monitor

- ◆ 7" LCD, 1024×600 resolution, 900:1 contrast, 160°(H) /160°(V) viewing angle
- ◆ HD/SD-SDI & HDMI input and loop through output, and CVBS input
- ◆ HDMI converted to HD/SD-SDI output
- ◆ Waveform - Y/Cb/Cr, R/G/B, and full scale (SDI&HDMI)
- ◆ Vector scope (SDI&HDMI)
- ◆ Histogram - R/G/B (SDI&HDMI)
- ◆ SDI 16-ch / HDMI 2-ch embedded audio meter display
- ◆ SDI/HDMI embedded audio output via 3.5mm earphone
- ◆ SDI timecode display
- ◆ Peaking focus assist (SDI&HDMI)
- ◆ False color (SDI&HDMI)
- ◆ Zebra stripes (SDI&HDMI)
- ◆ Blue only (SDI&HDMI)
- ◆ Internal 100% colorbar (SDI&HDMI)
- ◆ Underscan / Overscan, safety mark
- ◆ Canon DSLR scale zoom-in
- ◆ Image flip
- ◆ Front & rear TALLY light
- ◆ V-mount, Gold mount or snap-on DV mount: F/P/J/C/U/E/B/V/I



S-1071H 7-inch 3GSDI&HDMI LCD Monitor

- ◆ 7" LCD, 1024×600 resolution, 900:1 contrast, 160°(H) /160°(V) viewing angle
- ◆ 3G/HD/SD-SDI, HDMI, CVBS, input and loop through output
- ◆ SDI/HDMI embedded audio output via 3.5mm earphone
- ◆ Underscan / Overscan, safety mark
- ◆ Canon DSLR scale zoom-in
- ◆ Image flip
- ◆ Front & rear TALLY light
- ◆ V-mount, Gold mount or snap-on DV mount: F/P/J/C/U/E/B/V/I



EFP application monitors

Introduction

The EFP application monitors are based on S-1071F and S-1071H models, and have the additional picture-in-picture function, specially for EFP system to monitor the switcher returned video. To simplify the cable connection, the EFP application monitors provided a multi-functional DB-9 interface, which centralized DC power input, CVBS input, picture-in-picture switch on/off and TALLY light controlling.



S-1071F(EFP)

- ◆ 7" LCD, 1024×600, 900:1 contrast, 160°(H)/ 160°(V) viewing angle
- ◆ HD/SD-SDI & HDMI input and loop through output, and CVBS input
- ◆ Under SDI input, Pic-in-Pic display another channel of SDI or CVBS
- ◆ Under HDMI input, Pic-in-Pic display another channel of CVBS
- ◆ Overlay window position selection (4 corners or center)
- ◆ Multi-functional DB-9 port
- ◆ 2-ch SDI or HDMI embedded audio meter display
- ◆ The same other video analysis functions as S-1071F



S-1071H(EFP)

- ◆ 7" LCD, 1024×600, 900:1 contrast, 160°(H)/ 160°(V) viewing angle
- ◆ 3G/HD/SD-SDI, HDMI, CVBS, input and loop through output
- ◆ Under SDI or HDMI input, Pic-in-Pic display another channel of CVBS
- ◆ Overlay window position selection (4 corners or center)
- ◆ Overlay window size adjustable
- ◆ Multi-functional DB-9 port
- ◆ SDI embedded audio output via 3.5mm earphone
- ◆ The same other functions as S-1071H



Specifications:

	Model	S-1071F	S-1071H	S-1071F(EFP)	S-1071H(EFP)
Picture	LCD size	7-inch	7-inch	7-inch	7-inch
	Display area	153.6×90mm	153.6×90mm	153.6×90mm	153.6×90mm
	Resolution	1024×600	1024×600	1024×600	1024×600
	Aspect ratio	16:9 (4:3 adjustable)	16:9 (4:3 adjustable)	16:9 (4:3 adjustable)	16:9 (4:3 adjustable)
	Viewing angle	160°(H)/160°(V)	160°(H)/160°(V)	160°(H)/160°(V)	160°(H)/160°(V)
	Brightness / Contrast	400cd/m ² , 900:1	400cd/m ² , 900:1	400cd/m ² , 900:1	400cd/m ² , 900:1
	Input	SDI	HD/SD-SDI ×2	3G/HD/SD-SDI ×1	HD/SD-SDI ×2
HDMI		HDMI ×1	HDMI ×1	HDMI ×1	HDMI ×1
CVBS		CVBS ×1	CVBS ×1	CVBS ×1	CVBS ×1
L/R stereo audio		—	L/R audio ×1	—	L/R audio ×1
SDI loop out		HD/SD-SDI ×2	3G/HD/SD-SDI ×1	HD/SD-SDI ×2	3G/HD/SD-SDI ×1
HDMI loop out		HDMI ×1	HDMI ×1	HDMI ×1	HDMI ×1
CVBS loop out		—	CVBS ×1	—	CVBS ×1
Output	HDMI converted to SDI out	HDMI to HD/SD-SDI ×1	—	—	—
	Earphone socket	3.5mm earphone ×1	3.5mm earphone ×1	3.5mm earphone ×1	3.5mm earphone ×1
	Power consumption	≤12W	≤8W	≤12W	≤8W
	Working voltage	DC / Battery 6.5-17V			
General	Working environment	0° - +40°C temperature, 10%-90% humidity			
	Dimension	192×139×47mm	192×139×47mm	192×139×47mm	192×139×47mm
	Weight (main body)	550g	550g	550g	550g



S-1071C+ 7-inch HDMI LCD Monitor

- ◆ 7" LCD, 1024×600 resolution, 900:1 contrast, 160°(H) /160°(V) viewing angle
- ◆ CVBS input and loop through output, HDMI input
- ◆ HDMI audio meter display
- ◆ Peaking focus assist (HDMI)
- ◆ False color (HDMI)
- ◆ Zebra stripes (HDMI)
- ◆ Underscan / Overscan, safety mark
- ◆ Canon DSLR scale zoom-in
- ◆ Image flip
- ◆ Front & rear TALLY light
- ◆ V-mount, Gold mount or snap-on DV mount: F/P/J/C/U/E/B/V/I



S-1071C 7-inch HDMI LCD Monitor

- ◆ 7" LCD, 1024×600 resolution, 900:1 contrast, 160°(H) /160°(V) viewing angle
- ◆ HDMI&CVBS input and loop through output
- ◆ Underscan / Overscan, safety mark
- ◆ Canon DSLR scale zoom-in
- ◆ Image flip
- ◆ Front & rear TALLY light
- ◆ V-mount, Gold mount or snap-on DV mount: F/P/J/C/U/E/B/V/I



S-1051H 5-inch 3GSDI&HDMI LCD Monitor

- ◆ 5" LCD, 800×480 resolution, 500:1 contrast, 140°(H) /120°(V) viewing angle
- ◆ 3G/HD/SD-SDI, HDMI, CVBS input and loop through output
- ◆ SDI embedded audio output via 3.5mm earphone
- ◆ Underscan / Overscan, safety mark
- ◆ Canon DSLR scale zoom-in
- ◆ Image flip
- ◆ Snap-on DV mount: F/P/J/C/U/E/B/V/I



S-1051C 5-inch HDMI LCD Monitor

- ◆ 5" LCD, 800×480 resolution, 500:1 contrast, 140°(H) /120°(V) viewing angle
- ◆ HDMI input
- ◆ Peaking focus assist (HDMI)
- ◆ False color (HDMI)
- ◆ Underscan / Overscan, safety mark
- ◆ Canon DSLR scale zoom-in
- ◆ Snap-on DV mount: F/P/J/C/U/E/B/V/I



Specifications:

	Model	S-1071C+	S-1071C	S-1051H	S-1051C
Picture	LCD size	7-inch	7-inch	5-inch	5-inch
	Display area	153.6×90mm	153.6×90mm	108×64.8mm	108×64.8mm
	Resolution	1024×600	1024×600	800×480	800×480
	Aspect ratio	16:9 (4:3 adjustable)	16:9 (4:3 adjustable)	16:9 (4:3 adjustable)	16:9 (4:3 adjustable)
	Viewing angle	160°(H)/160°(V)	160°(H)/160°(V)	140°(H)/120°(V)	140°(H)/120°(V)
	Brightness / Contrast	400cd/m ² , 900:1	400cd/m ² , 900:1	350cd/m ² , 500:1	350cd/m ² , 500:1
Input	SDI	—	—	3G/HD/SD-SDI ×1	—
	HDMI	HDMI ×1	HDMI ×1	HDMI ×1	HDMI ×1
	CVBS	CVBS ×1	CVBS ×1	CVBS ×1	—
	L/R stereo audio	L/R audio ×1	L/R audio ×1	—	—
Output	SDI loop out	—	—	3G/HD/SD-SDI ×1	—
	HDMI loop out	—	HDMI ×1	HDMI ×1	—
	CVBS loop out	CVBS ×1	CVBS ×1	CVBS ×1	—
	Earphone socket	3.5mm earphone ×1	3.5mm earphone ×1	3.5mm earphone ×1	3.5mm earphone ×1
General	Power consumption	≤9W	≤7W	≤8W	≤6W
	Working voltage	DC / Battery 6.5-17V			
	Working environment	0°- +40°C temperature, 10%-90% humidity			
	Dimension	192×139×47mm	192×139×47mm	149×107×28mm	149×107×28mm
	Weight (main body)	550g	550g	400g	400g

SWIT On-camera Monitor Package Accessories

Standard package includes:



Luxury package includes additional:





S-1221F 21.5-inch Full HD Waveform Studio LCD Monitor

- 21.5-inch, 1920x1080, 178°(H)/178°(V) viewing angle, 1000:1 contrast
- HD/SD-SDI & HDMI input and loop through output, and CVBS input
- HDMI converted to SDI output
- 16-ch SDI embedded audio meter / 8-ch HDMI audio meter display
- Waveform - Y/Cb/Cr, R/G/B, and full scale (SDI&HDMI)
- Vectorscope, Histogram - R/G/B (SDI&HDMI)
- SDI timecode display
- Peaking focus assist, Red/Blue dual color (SDI&HDMI)
- False color, Blue only, Zebra stripes (SDI&HDMI)
- Internal 100% colorbar (SDI&HDMI)
- Marker: 4:3, 13:9, 14:9, 15:9, 1.85:1, 2.35:1
- Magnetic LCD protective glass, V-mount / Gold mount plate



S-1221H 21.5-inch Full HD Studio LCD Monitor

- 21.5-inch, 1920x1080, 178°(H)/178°(V) viewing angle, 1000:1 contrast
- 3G/HD/SD-SDI & HDMI input and loop through output, and CVBS input
- 2-ch SDI/HDMI embedded audio meter display
- SDI timecode display
- Peaking focus assist, Red/Blue dual color (SDI&HDMI)
- Blue only, Zebra stripes (SDI&HDMI)
- Marker: 4:3, 13:9, 14:9, 15:9, 1.85:1, 2.35:1
- Magnetic LCD protective glass, V-mount / Gold mount plate



S-1161H 15.6-inch Full HD Studio LCD monitor



- 15.6-inch 10-bit LCD, Full HD 1920x1080 resolution
- 178°(H)/178°(V) viewing angle, 700:1 contrast
- 3G/HD/SD-SDI, HDMI input and loop through output, and CVBS input
- 2-ch SDI/HDMI embedded audio meter display
- SDI timecode display
- Peaking focus assist, Red/Blue dual color (SDI&HDMI)
- Blue only, Zebra stripes (SDI&HDMI)
- Marker: 4:3, 13:9, 14:9, 15:9, 1.85:1, 2.35:1
- Magnetic LCD protective glass, V-mount / Gold mount plate



Specifications:

	Model	S-1221F	S-1221H	S-1161H
LCD	Size	21.5-inch	21.5-inch	15.6-inch
	Display area	476.64x268.11mm	476.64x268.11mm	344x194mm
	Resolution	1920x1080 (16:9)	1920x1080 (16:9)	1920x1080 (16:9)
	Viewing angle	H 178°, V 178°	H 178°, V 178°	H/V: 178°/178°
	Brightness	250cd/m ²	250cd/m ²	200cd/m ²
	Color	8-bit, 16.77 million colors	8-bit, 16.77 million colors	10-bit, 1.074 billion colors
	Contrast	1000:1	1000:1	700:1
Input	SDI	HD/SD-SDI x2	3G/HD/SD-SDI x2	3G/HD/SD-SDI x2
	HDMI	HDMI x1	HDMI x1	HDMI x1
	CVBS	CVBS x1	CVBS x1	CVBS x1
Output	Analog audio	3.5mm socket x1	3.5mm socket x1	3.5mm socket x1
	SDI loop	HD/SD-SDI x2	3G/HD/SD-SDI x1	3G/HD/SD-SDI x1
	HDMI loop	HDMI x1	HDMI x1	HDMI x1
General	HDMI converted to SDI	HDMI to SDI x1	—	—
	Analog audio	3.5mm socket x1	3.5mm socket x1	3.5mm socket x1
	Input voltage	DC/Battery: 11-17V	DC/Battery: 11-17V	DC or battery 11V-17V
	Power consumption	<45W	<40W	<30W
	Working environment	0-40°C temperature, 10%-90% humidity		
	Dimension	525x358x47mm	525x358x47mm	394x285x47mm

M-1090F 9-inchx2 HDSDI&HDMI Waveform Rack LCD Monitor

- 9" LCDx2, 1280x800 resolution, 700:1 contrast
- Standard 19" 4RU rack install, ±30° rotatable
- HD/SD-SDI & HDMI input and loop through output, CVBS input
- HDMI converted to SDI output
- Waveform - Y/Cb/Cr, R/G/B, and full scale (SDI&HDMI)
- Vector scope (SDI&HDMI)
- Histogram - R/G/B (SDI&HDMI)
- SDI 16-ch / HDMI 2-ch embedded audio meter display
- SDI/HDMI embedded audio output via 3.5mm earphone
- SDI timecode display
- Peaking focus assist (SDI&HDMI)
- False color (SDI&HDMI)
- Zebra stripes (SDI&HDMI)
- Blue only (SDI&HDMI)
- Internal 100% colorbar (SDI&HDMI)
- Underscan / Overscan, safety mark
- Canon DSLR scale zoom-in
- Image flip
- Front TALLY light



M-1090H 9-inchx2 3GSDI&HDMI Rack LCD Monitor

- 9" LCDx2, 1280x800 resolution, 700:1 contrast
- Standard 19" 4RU rack install, ±30° rotate.
- 3G/HD/SD-SDI, HDMI, CVBS, input and loop through output
- SDI/HDMI embedded audio output via 3.5mm earphone or speaker
- Underscan / Overscan, safety mark
- Canon DSLR scale zoom-in
- Image flip
- Front TALLY light



M-1051H 5-inchx3 3GSDI&HDMI Rack LCD Monitor

- 5" LCDx3, 800x480 resolution, 500:1 contrast, 140°(H) /120°(V) viewing angle
- Standard 19" 3RU rack install, ±30° rotate.
- 3G/HD/SD-SDI, HDMI, CVBS input and loop through output
- SDI/HDMI embedded audio output via 3.5mm earphone
- Underscan / Overscan, safety mark
- Zoom-in (DSLR scale and pixel to pixel)
- Image flip
- Front TALLY light



Specifications:

	Model	M-1090F	M-1090H	M-1051H
Picture	LCD size	9-inchx2	9-inchx2	5-inchx3
	Resolution	1280x800	1280x800	800x480
	Aspect ratio	16:9 (4:3 adjustable)	16:9 (4:3 adjustable)	16:9 (4:3 adjustable)
	Viewing angle	140°H/120°V	140°H/120°V	140°(H)/120°(V)
	Brightness / Contrast	250cd/m ² , 700:1	250cd/m ² , 700:1	350cd/m ² , 500:1
Input (each LCD)	SDI	HD/SD-SDI x2	3G/HD/SD-SDI x1	3G/HD/SD-SDI x1
	HDMI	HDMI x1	HDMI x1	HDMI x1
	CVBS	CVBS x1	CVBS x1	CVBS x1
	L/R stereo audio	—	L/R audio x1	—
	SDI loop out	HD/SD-SDI x2	3G/HD/SD-SDI x1	3G/HD/SD-SDI x1
Output (each LCD)	HDMI loop out	HDMI x1	HDMI x1	HDMI x1
	HDMI converted to SDI out	HDMI to SDI x1	—	—
	CVBS loop out	—	CVBS x1	CVBS x1
	Earphone socket	3.5mm earphone x1	3.5mm earphone x1	3.5mm earphone x1
	Power consumption	≤36W	≤30W	≤24W
General	Working voltage	DC 6.5-17V		
	Working environment	0°- 440°C temperature, 10%-90% humidity		
	Dimension	481x173x96mm	481x173x96mm	483x132x80mm
	Weight (main body)	2.6kg	2.6kg	2.1kg



M-1071F 7-inchx2 HDSDI&HDMI Waveform Rack LCD Monitor

- ◆ 7" LCDx2, 1024x600 resolution, 900:1 contrast, 160°(H) /160°(V) viewing angle
- ◆ Standard 19" 3RU rack install, ±30° rotate.
- ◆ HD/SD-SDI & HDMI input and loop through output, CVBS input
- ◆ HDMI converted to SDI output
- ◆ Waveform - Y/Cb/Cr, R/G/B, and full scale (SDI&HDMI)
- ◆ Vector scope (SDI&HDMI)
- ◆ Histogram - R/G/B (SDI&HDMI)
- ◆ SDI 16-ch / HDMI 2-ch embedded audio meter display
- ◆ SDI/HDMI embedded audio output via 3.5mm earphone
- ◆ SDI timecode display
- ◆ Peaking focus assist (SDI&HDMI)
- ◆ False color (SDI&HDMI)
- ◆ Zebra stripes (SDI&HDMI)
- ◆ Blue only (SDI&HDMI)
- ◆ Internal 100% colorbar (SDI&HDMI)
- ◆ Underscan / Overscan, safety mark
- ◆ Canon DSLR scale zoom-in
- ◆ Image flip
- ◆ Front TALLY light



M-1071H 7-inchx2 3GSDI&HDMI Rack LCD Monitor

- ◆ 7" LCDx2, 1024x600 resolution, 900:1 contrast, 160°(H) /160°(V) viewing angle
- ◆ Standard 19" 3RU rack install, ±30° rotate.
- ◆ 3G/HD/SD-SDI & CVBS input and loop through output, HDMI input
- ◆ SDI/HDMI embedded audio output via 3.5mm earphone
- ◆ Underscan / Overscan, safety mark
- ◆ Canon DSLR scale zoom-in
- ◆ Image flip
- ◆ Front TALLY light



M-1071C 7-inchx2 HDMI Rack LCD Monitor

- ◆ 7" LCDx2, 1024x600 resolution, 900:1 contrast, 160°(H) /160°(V) viewing angle
- ◆ Standard 19" 3RU rack install, ±30° rotate.
- ◆ HDMI input, CVBS input and loop through output
- ◆ Underscan / Overscan, safety mark
- ◆ Canon DSLR scale zoom-in
- ◆ Image flip
- ◆ Front TALLY light



Specifications:

	Model	M-1071F	M-1071H	M-1071C
Picture	LCD size	7-inchx2	7-inchx2	7-inchx2
	Resolution	1024x600	1024x600	1024x600
	Aspect ratio	16:9 (4:3 adjustable)	16:9 (4:3 adjustable)	16:9 (4:3 adjustable)
	Viewing angle	160°(H)/160°(V)	160°(H)/160°(V)	160°(H)/160°(V)
	Brightness / Contrast	400cd/m ² , 900:1	400cd/m ² , 900:1	400cd/m ² , 900:1
Input (each LCD)	SDI	HD/SD-SDI x2	3G/HD/SD-SDI x1	—
	HDMI	HDMI x1	HDMI x1	HDMI x1
	CVBS	CVBS x1	CVBS x1	CVBS x1
	L/R stereo audio	—	L/R audio x1	L/R audio x1
Output (each LCD)	SDI loop out	HD/SD-SDI x2	3G/HD/SD-SDI x1	—
	HDMI loop out	HDMI x1	—	—
	HDMI converted to SDI out	HDMI to SDI x1	—	—
	CVBS loop out	—	CVBS x1	CVBS x1
	Earphone socket	3.5mm earphone x1	3.5mm earphone x1	3.5mm earphone x1
General	Power consumption	≤24W	≤15W	≤12W
	Working voltage	DC 6.5-17V		
	Working environment	0°-40°C temperature, 10%-90% humidity		
	Dimension	483x132x80mm	483x132x80mm	483x132x80mm
	Weight (main body)	2.5kg	2.5kg	2.5kg

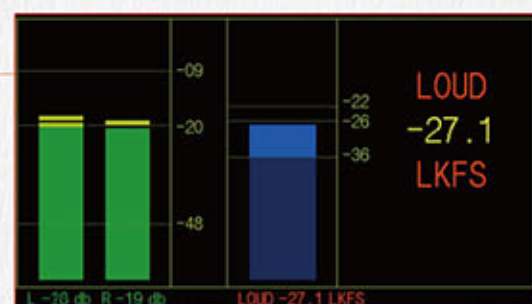


M-1072A Audio Loudness monitor

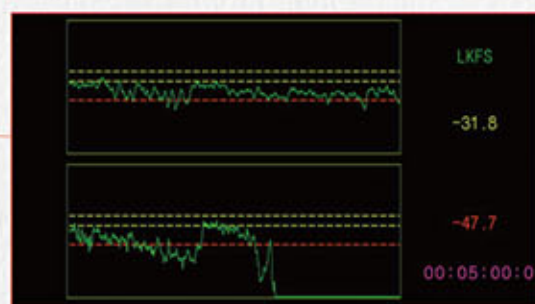
- 19-inch 3RU rack mount, with 7-inch LCD display, 1024x600 resolution
- Magnetically shielded coaxial speaker
- 2-ch live SDI Audio level meter display and live loudness meter display
- Loudness Histogram of full time and user defined time scale, and display average loudness value
- Loudness Waveform of the past 1 minute and user defined time, and display average loudness value
- Audio Lissajous figure display



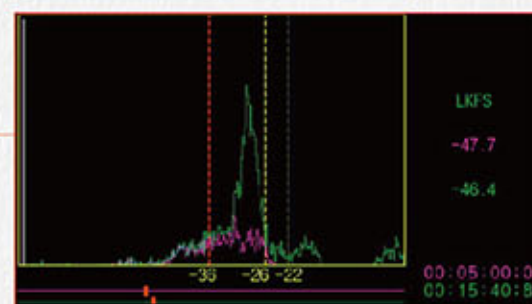
Quad-split display video and audio patterns



Audio level meter and live loudness meter



Loudness waveform for past 1 min and defined time scale



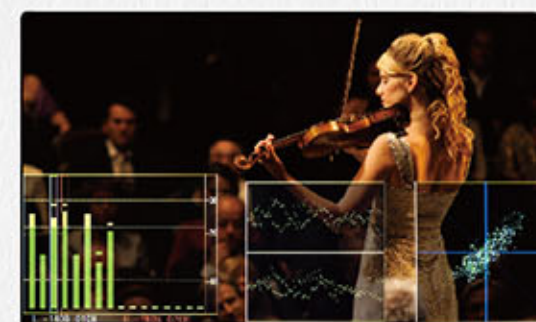
Loudness histogram for full time and defined time scale

* The audio loudness follows ITU-R BS.1770-3 and EBU-R-128 standard.

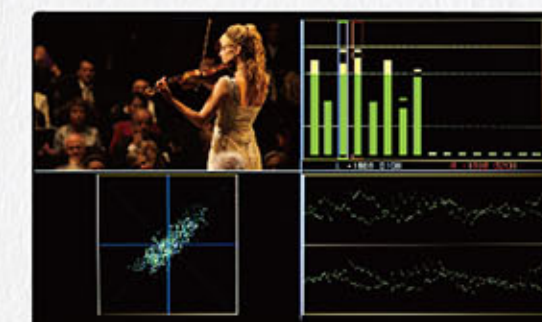


M-1071A SDI & HDMI audio and video monitor

- 19-inch 3RU rack mount, with 7-inch LCD display, 1024x600 resolution
- HD/SD-SDI, HDMI and CVBS multi format input
- 16-ch VU & PPM audio meter, select each pair to output via headphone or speaker
- Lissajous figure, select each pair to display
- Peak wave, select each pair to display
- Video full screen display or quad-split display with audio analysis figures



VU & PPM meter Peak wave Lissajous figure



Quad-split display

Specifications:

	Model	M-1072A	M-1071A
Picture	LCD size	7-inch	7-inch
	Resolution	1024x600	1024x600
	Aspect ratio	16:9 / 4:3	16:9 / 4:3
	Viewing angle	160°(H)/160°(V)	160°(H)/160°(V)
	Brightness / Contrast	400cd/m ² , 900:1	400cd/m ² , 900:1
Input	SDI	HD/SD-SDI×2	HD/SD-SDI×2
	HDMI	HDMI×1	HDMI×1
	CVBS	-	CVBS×1
Output	SDI loop out	HD/SD SDI×2	HD/SD SDI×2
	HDMI loop out	HDMI×1	HDMI×1
	Earphone socket	6.35mm earphone ×1	3.5mm earphone ×1
General	Power consumption	≤12W	≤17W
	Working voltage	DC 6.5-17V	DC 6.5-17V
	Working environment	0°- +40°C temperature, 10%-90% humidity	0°- +40°C temperature, 10%-90% humidity
	Dimension	480x123x130mm	483x130x96mm
	Weight (main body)	3.23kg	3.1kg



S-9204 4 SDI Multiviewer and Switcher

Introduction:

4 SDI Multiviewer via HDMI output

S-9204 is a solution of monitoring 4-ch SDI by a single HDMI television or monitor. There're 3 display patterns: Quad split display, one channel full screen switch display, and PGM/PVW mode display. Each input SDI has independent loop through output and support SDI timecode, embedded audio meter, video title editing on each displaying window.

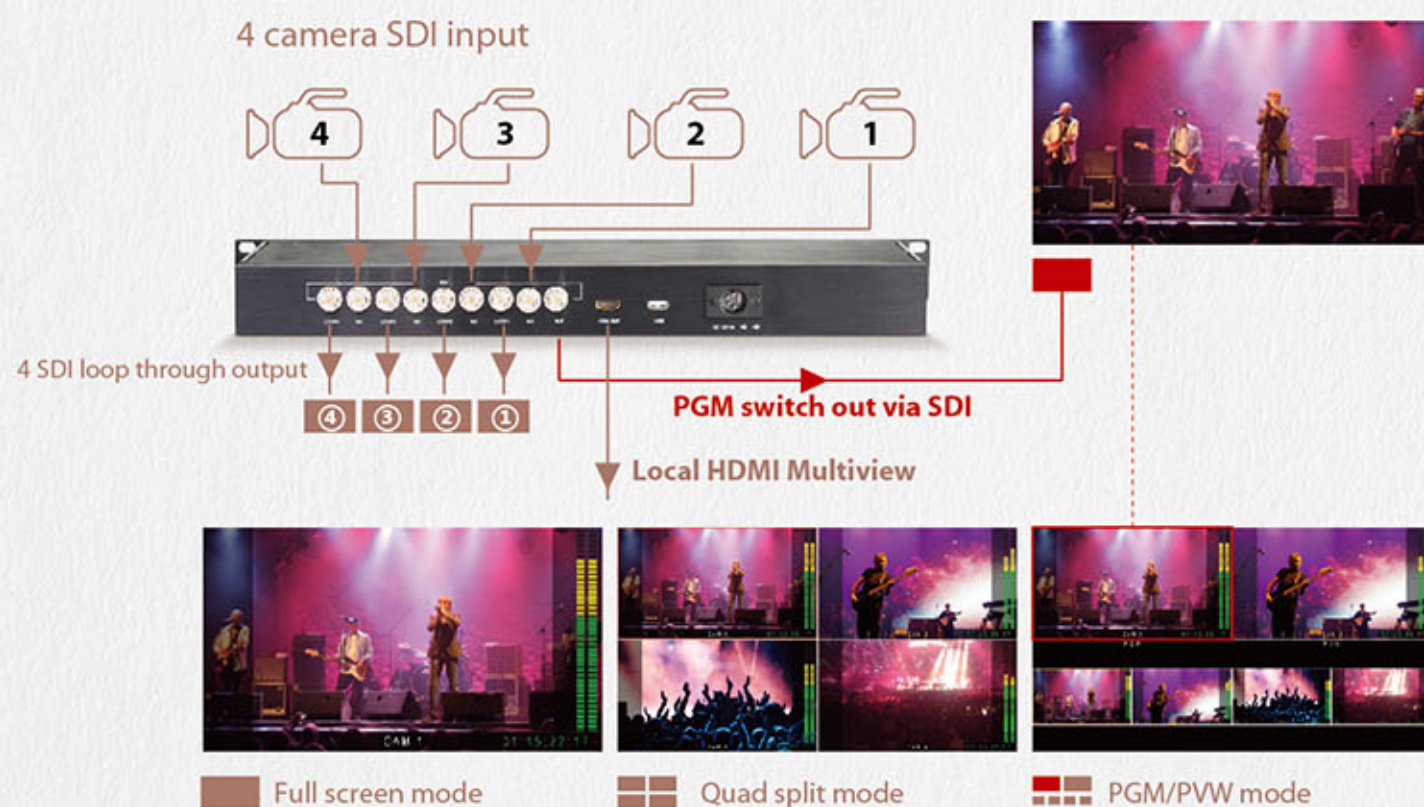
Basic Switcher function via SDI output:

S-9204 can be used as basic switcher in the PGM/PVW display mode. It supports PGM output via SDI and one key direct switching from PVW to PGM, with absolute zero delay.

Features:

- ◆ 4-ch HD/SD-SDI input
- ◆ 4-ch HD/SD-SDI loop through output
- ◆ Multiview output via HDMI
- ◆ Quad-split, Full screen, and PGM/PVW display modes
- ◆ PGM switcher output via SDI, with zero delay
- ◆ Output SDI embedded audio via 3.5mm socket
- ◆ SDI embedded audio meter (2-ch) display
- ◆ SDI time code display
- ◆ Customer editable video title for each input channel
- ◆ 19-inch 1RU rack mount

Multiview display modes



Remark: All the input SDI formats should be the same in the multiview mode.



S-9104 4 SDI Quad Viewer

Features:

- ◆ 4-channel HD/SD-SDI input
- ◆ 4-channel HD/SD-SDI loop through output
- ◆ Output HDMI and HDSDI as quad-split or full screen switch display
- ◆ Support HD/SD mixed input in Quad-split mode
- ◆ SD video ratio 16:9 / 4:3 switchable in Quad-split mode
- ◆ 4:3 range marker in 16:9 HD input
- ◆ Output SDI embedded audio via 3.5mm earphone socket
- ◆ SDI embedded audio meter (4-ch) display
- ◆ SDI time code display
- ◆ UMD / soft TALLY display (TSL protocol)
- ◆ Frozen frame / Black frame alert
- ◆ Video lost / Audio lost alert
- ◆ 19-inch 1RU rack mount



Remark: In the quad split mode, support 480i/1080i60 mixed input and 576i/1080i50 mixed input. For all the other formats, the quad split mode requires the 4 input SDI of the same formats.

Specifications:

	S-9204	S-9104	
Input	HD/SD-SDI x4	HD/SD-SDI x4	
Output	HD/SD-SDI loop out x4	HD/SD-SDI loop out x4	
	HDMI multiview output x1	HDMI multiview output x1	
	HD/SD-SDI PGM switch output x1	HD/SD-SDI multiview output x1	
	3.5mm Earphone x1	3.5mm Earphone x1	
Format	HDMI	1080i(60 / 59.94 / 50), 720p(60 / 59.94 / 50), 1080p(60 / 59.94 / 50 / 30 / 29.97 / 25 / 24 / 23.98)	
	SDI	SMPTE-274M	1080p(30 / 29.97 / 25 / 24 / 23.98), 1080i(60 / 59.94 / 50)
		SMPTE-RP211	1080psf (30 / 29.97 / 25 / 24 / 23.98)
		SMPTE-296M	720p(60 / 59.94 / 50)
		ITU-R BT.656	576i(50)
		SMPTE-125M	480i(59.94)
Audio	48KHz Sync		
Power consumption	< 8W		
Working voltage	DC12V		
Working environment	Temperature: 0°C~+40°C, Humidity:10%-90%		
Dimension	483x45x251 mm		
Net weight	1.44kg		



200m

WHDI Wireless System

Uncompressed 3G-SDI/HDMI
Up to 200m, ≤1ms Latency



S-4913T
Transmitter



S-4913R
Receiver



S-4913T / S-4913R 200m HDMI Wireless Transmission System

- ♦ Professional WHDI (MIMO/OFDM) technology
- ♦ Uncompressed HDMI wireless transmission
- ♦ Up to 200 meters (LOS) effective transmission distance
- ♦ Converted to SDI in the receiver output
- ♦ Less than 1ms latency
- ♦ 5.1-5.9GHz license free operation frequency
- ♦ AES 128bit encryption
- ♦ Compact transmitter design for HDV camcorders



S-4903T
Transmitter



S-4903R
Receiver



S-4903T / S-4903R 200m SDI Wireless Transmission System

- ♦ Professional WHDI (MIMO/OFDM) technology
- ♦ Uncompressed 3G/HD-SDI wireless transmission
- ♦ 2-ch SDI embedded audio transmission
- ♦ Up to 200 meters (LOS) effective transmission distance
- ♦ Less than 1ms latency
- ♦ 5.1-5.9GHz license free operation frequency
- ♦ AES 128bit encryption
- ♦ V-mount adaptor for cameras and batteries

Specifications:

Model	S-4903T	S-4903R	S-4913T	S-4913R		
Input	3G/HD-SDI input x1	Wireless receiving	HDMI input x1	Wireless receiving		
Output	Wireless transmitting 3G/HD-SDI loop output x1	3G/HD-SDI output x2	Wireless transmitting	3G/HD-SDI output x2		
Format	SDI Input	SDI Output	The same as input SDI format	HDMI Input	The same as input HDMI format	
				1080p (60 / 59.94 / 50)		1080p (60 / 59.94 / 50)
				1080psf (30 / 29.97 / 25 / 24 / 23.98)		1080psf (30 / 29.97 / 25 / 24 / 23.98)
				1080p (30 / 29.97 / 25 / 24 / 23.98)		1080p (30 / 29.97 / 25 / 24 / 23.98)
1080i (60 / 59.94 / 50)	1080i (60 / 59.94 / 50)					
720p (60 / 59.94 / 50)	720p (60 / 59.94 / 50)					
General	Wireless frequency	5.1 ~ 5.9GHz License-free		5.1 ~ 5.9GHz License-free		
	Radio modules	OFDM		OFDM		
	Max Transmission distance	Approx 200m		Approx 200m		
	Latency	< 1ms		< 1ms		
	Power consumption	< 10W		< 10W		
	Radio power	< 63mW	/	< 63mW	/	
	Input voltage	DC 7 ~ 17V	DC 8 ~ 17V	DC 7 ~ 17V	DC 8 ~ 17V	
	Working environment	Temperature: 0°C ~ +40°C		Temperature: 0°C ~ +40°C		
	Dimension	146x344x58 (with antenna)		71x270x28mm (with antenna)	146x344x58mm (with antenna)	
	Net weight	624g (with antenna)	655g (with antenna)	256g (with antenna)	655g (with antenna)	

The SWIT portable converter products are heavy duty designed, with unibody aluminium alloy housing, strong and protective for the connectors. Bottom screw threads and plates are provided for easy installation.

The portable converters cover SDI and HDMI interconversion, SDI and Optical fiber interconversion and SDI distribution with the highest broadcast quality. Up to 3Gb/s SDI supported, the low SDI jitter and SDI re-clocking allow you to use long SDI cable to get the original quality images.

Besides video conversion, the SDI embedded audio can be converted simultaneously, and the HDMI to SDI converter can also embed the analog audio into SDI.

S-4600 SDI to HDMI Converter

- ◆ Support 3Gb/s SDI
- ◆ 1 SDI input, 1 HDMI output, and 1 SDI loop output
- ◆ Embed SDI audio to HDMI output
- ◆ SDI audio output via 3.5mm earphone socket



S-4601 HDMI to SDI Converter

- ◆ Support 3Gb/s SDI
- ◆ 1 HDMI input, 2 SDI output
- ◆ 1 analog audio (3.5mm) input
- ◆ Embed HDMI audio to SDI output
- ◆ Embed analog audio (3.5mm) to SDI output



S-4604 SDI 1 to 4 Distributor

- ◆ Support 3Gb/s SDI
- ◆ 1 SDI input, 4 SDI output
- ◆ SDI re-clocking and amplifier



Specifications:

Model	S-4600	S-4601	S-4604
Input	3G-SDI x1	HDMI x1 3.5mm audio x1	3G-SDI x1
Output	HDMI x1 3G-SDI loop x1 3.5mm audio x1	3G-SDI x2	3G-SDI x4
Format	HDMI	1080p (60 / 59.94 / 50), 1080i (60 / 59.94 / 50), 1080p (30 / 29.97 / 25 / 24 / 23.98), 720p (60 / 59.94 / 50), 480i, 576i	
	SDI	1080p (60 / 59.94 / 50)	
		1080i (60 / 59.94 / 50), 1080p (30 / 29.97 / 25 / 24 / 23.98)	
		1080psf (30 / 29.97 / 25 / 24 / 23.98)	
		720p (60 / 59.94 / 50)	
		480i (59.94)	
		576i (50)	
Power consumption	≤3W	≤3W	≤2W
Working voltage	DC 6.5-17V		
Working environment	Temperature: 0°C ~ +70°C, Humidity: 10%-90%		
Dimension	98x84x29 mm	98x84x29 mm	105x84x29 mm
Net weight	200g	210g	240g



S-4605 SDI to OPTICAL Converter

- ◆ Support 3Gb/s SDI
- ◆ 1 SDI input, 1 OPTICAL output, and 1 SDI loop output
- ◆ Single-mode fiber, max 20km reliable transmission
- ◆ Support hot swap of optical module



S-4606 OPTICAL to SDI Converter

- ◆ Support 3Gb/s SDI
- ◆ 1 OPTICAL input, 2 SDI output
- ◆ Single-mode fiber, max 20km reliable transmission
- ◆ Support hot swap of optical module



S-4607 Bi-directional SDI/OPTICAL Converter

- ◆ Support 3Gb/s SDI
- ◆ Convert SDI to OPTICAL, and have SDI loop out
- ◆ Convert OPTICAL to 2 SDI
- ◆ Single-mode fiber, max 20km reliable transmission
- ◆ Support hot swap of optical module



Specifications:

Model	S-4605	S-4606	S-4607
Input	3G-SDI x1	OPTICAL x1	3G-SDI x1
Output	OPTICAL x1 3G-SDI loop x1	3G-SDI x2	OPTICAL x1 3G-SDI x2 3G-SDI loop x1
Format	SDI	1080p (60 / 59.94 / 50)	
		1080i (60 / 59.94 / 50), 1080p (30 / 29.97 / 25 / 24 / 23.98)	
		1080psf (30 / 29.97 / 25 / 24 / 23.98)	
		720p (60 / 59.94 / 50)	
		480i (59.94)	
		576i (50)	
OPTICAL	SMPTE 297-2006		
Wavelength	1260-1580nm input, 1310nm output		
Max SM fiber length	20 kilometers		
Power consumption	≤3W	≤3W	≤4W
Working voltage	DC 6.5-17V		
Working environment	Temperature: 0°C ~ +70°C, Humidity: 10%-90%		
Dimension	98x84x29 mm	98x84x29 mm	98x84x29 mm
Net weight	220g	220g	250g

Adopted high quality Lithium cells

For more than 15 years, SWIT has been the leading brand of broadcast camera batteries. The first reason is the high quality Lithium cells adopted. The high quality cells are featured with long life, durability, safety, and most of all, the cells have very little difference to each other, which ensures the high performance of the whole battery pack. Moreover, the cells we're using have a smooth discharging curve by voltage, so that you can judge the remaining running time accordingly. Also when in storage, the self-discharging rate is very little, which extends the battery life effectively.



- Side circuit board, pressure free
- Thicker and wider nickel slice
- Cells of triangular structure, stable and anti-shock
- Protective cell holder

High craft level

Inside the battery pack, we use the thicker and wider nickel slice to solder the cells, minimize the voltage drop, dissipate heating, and enhance the assembly intensity. The cells are arranged as triangular structure in the battery pack, stable and anti-shock. The cell holder in the brick batteries can protect the cells pack, and separate the circuit board from the cells, to keep the circuit board away from internal pressure and ensure a stable working environment.

Multiple safety protection design

All SWIT batteries have a MCU to measure and record running data, and will cut off power when over-voltage, under-voltage, over-current, over-charging, over-discharging, high-temperature or low-temperature is detected.

Meanwhile, the high-impact ABS housing (High-impact, injection-moulded polycarbonate, or medium impact ABS cases) is on the battery pack, with waist design and non-slip tread for secure handling.

Strict Quality Control

All battery cells are strictly screened. Only when the voltage difference is less than 0.03V, the cells are allowed to be assembled into one battery pack, which will increase the internal compatibility and prolong the battery life.

In addition, we take tests for all raw materials and producing tools to ensure all SWIT products. compliance with the RoHS regulations.



Why Choose SWIT Batteries

Cell balance adjustment

After the batteries are used for a period of time, the cells voltage might get different, and our specially designed circuit can optimize the imbalanced cells, to prolong the battery life.

Multi-camera compatibility

SWIT batteries cover a wide range of cameras. We supply V-mount, Gold mount, NP-1 style and various DV camcorder batteries. You can always find the battery you need from SWIT.



14.4V D-tap DC output socket



7.2V Pole DC output socket

DC output functions

SWIT batteries provide DC output socket, for powering other on-camera equipments simultaneously. The brick batteries have 14.4V D-tap connections, and DV camcorder batteries have 7.2V pole connections. The DC output socket is protected by a rubber cover, to protect the pins away from dust or liquid.



Power indicator on brick battery



Power indicator on DV battery

LED power indicators

SWIT batteries provide the 4-level LED power indicators on both brick batteries and DV batteries, to give a remaining power idea to users before attached to the cameras.

IATA Complied Separable Li-ion Battery

Introduction

The IATA DGR regulations restrict the air transportation of over 100Wh Li-ion battery packs, while the high capacity batteries are quite necessary for cameramen. SWIT first developed the separable battery in 2007. The battery can be divided into 2 parts, and each part has under 100Wh capacity and is not restricted by air transportation. When using the battery, just assemble the two parts to get a high capacity battery. The separable batteries are 63+63Wh, 73+73Wh, 79+79Wh, 92+92Wh capacity optional. The individual part cannot be used, because it will reduce battery life if the 2 parts have different cycle times.

SWIT®
Batteries



S-8192A/S 92+92Wh



S-8172A/S 79+79Wh



S-8152A/S 73+73Wh



S-8132A/S 63+63Wh



S-8192A, S-8172A, S-8152A, S-8132A: Gold mount
S-8192S, S-8172S, S-8152S, S-8132S: V-mount

- ◆ Large capacity battery of separable design
- ◆ Not restricted by IATA air transportation regulations
- ◆ Patent protected
- ◆ D-tap DC output socket
- ◆ 4-level LED power indicator
- ◆ Max 100W, 8A output
- ◆ Multiple circuit protections

Batteries

Heavy Duty Cine-Camera Li-ion Battery

Introduction

The Heavy Duty series batteries are specially designed for Cine-Cameras that require high load power. Normal batteries have Max 100W/8A output, while the Heavy Duty series can constantly output as high as 180W/15A. Besides the Cine-Camera itself, the Heavy Duty batteries also can power other on-camera equipments simultaneously. Moreover, the long-time high load powering will reduce the life of normal batteries quickly, but the Heavy Duty batteries are not affected.



S-8210A/S 115Wh

- ◆ New high power Li-ion cells
- ◆ Max 150W, 12A constant output
- ◆ D-tap DC output socket
- ◆ 4-level LED power indicator
- ◆ Multiple circuit protections
- S-8210A: Gold mount
- S-8210S: V-mount

High Load



S-8260A/S 172Wh

- ◆ New high power Li-ion cells
- ◆ Max 180W, 15A constant output
- ◆ D-tap DC output socket
- ◆ 4-level LED power indicator
- ◆ Multiple circuit protections
- S-8260A: Gold mount
- S-8260S: V-mount

High Load

Digital Li-ion Battery

Introduction

The D- series are the digital batteries with intelligent chips, which could exchange real-time data with SONY or RED cameras, and display exact remaining power percentage in the camera viewfinder.



INFO

D-8161A/S 190Wh

- ◆ Intelligent digital chip
- ◆ Display remaining power percentage on SONY cameras
- ◆ 4-level LED power indicator
- ◆ Max 100W, 8A output
- ◆ Multiple circuit protections
- D-8161A: Gold mount
- D-8161S: V-mount



RED INFO

D-8161R 190Wh

- ◆ Intelligent digital chip
- ◆ Display remaining power percentage on RED cameras
- ◆ 4-level LED power indicator
- ◆ Max 100W, 8A output
- ◆ Multiple circuit protections



RED INFO

D-8111R 126Wh

- ◆ Intelligent digital chip
- ◆ Display remaining power percentage on RED cameras
- ◆ 4-level LED power indicator
- ◆ Max 100W, 8A output
- ◆ Multiple circuit protections

SWIT® Batteries

Broadcast camera Li-ion battery



S-8080A/S 95Wh



S-8082A/S 95Wh



S-8056N 73Wh

- ◆ NP-1 style battery
- ◆ 4-level LED power indicator
- ◆ Max 50W, 3.5A output
- ◆ Multiple circuit protections



S-8110A/S 126Wh



S-8160A/S 190Wh



S-8180A/S 220Wh



High Load

- ◆ D-tap DC output socket
- ◆ 4-level LED power indicator
- ◆ S-8080A/S, S-8082A/S: Max 50W, 3.5A output
- ◆ S-8110A/S, S-8160A/S: Max 100W, 8A output
- ◆ S-8180A/S: Max 150W, 12A output

- ◆ Multiple circuit protections
- S-8080A, S-8082A, S-8110A, S-8160A, S-8180A: Gold mount
- S-8080S, S-8082S, S-8110S, S-8160S, S-8180S: V-mount

Specifications:

Model	Battery type	Nominal voltage	Capacity	Max output	Dimension	Weight
S-8192A	Gold mount	14.4V	184Wh / 12.8Ah	100W, 8A	168x101x65mm	1.27kg
S-8192S	V-mount	14.4V	184Wh / 12.8Ah	100W, 8A	168x101x60mm	1.27kg
S-8172A	Gold mount	14.4V	158Wh / 11Ah	100W, 8A	168x101x65mm	1.25kg
S-8172S	V-mount	14.4V	158Wh / 11Ah	100W, 8A	168x101x60mm	1.25kg
S-8152A	Gold mount	14.4V	146Wh/10.2Ah	100W, 8A	168x93x65mm	1.05kg
S-8152S	V-mount	14.4V	146Wh/10.2Ah	100W, 8A	168x93x60mm	1.05kg
S-8132A	Gold mount	14.4V	126Wh / 8.8Ah	100W, 8A	168x93x65mm	1.01kg
S-8132S	V-mount	14.4V	126Wh / 8.8Ah	100W, 8A	168x93x60mm	1.01kg
S-8210A	Gold mount	14.4V	115Wh / 8Ah	150W, 12A	165x90x53mm	0.9kg
S-8210S	V-mount	14.4V	115Wh / 8Ah	150W, 12A	165x90x51mm	0.9kg
S-8260A	Gold mount	14.4V	172Wh / 12Ah	180W, 15A	165x90x68mm	1.3kg
S-8260S	V-mount	14.4V	172Wh / 12Ah	180W, 15A	165x90x66mm	1.3kg
D-8161A	Gold mount	14.4V	190Wh / 13.2Ah	100W, 8A	168x98x70mm	1.3kg
D-8161S	V-mount	14.4V	190Wh / 13.2Ah	100W, 8A	168x98x68mm	1.3kg
D-8161R	V-mount, RED camera	14.4V	190Wh / 13.2Ah	100W, 8A	168x98x68mm	1.3kg
D-8111R	V-mount, RED camera	14.4V	126Wh / 8.8Ah	100W, 8A	168x98x52mm	0.9kg
S-8080A	Gold mount	14.4V	95Wh / 6.6Ah	50W, 3.5A	165x90x51mm	0.8kg
S-8080S	V-mount	14.4V	95Wh / 6.6Ah	50W, 3.5A	165x90x49mm	0.8kg
S-8082A	Gold mount	14.4V	95Wh / 6.6Ah	50W, 3.5A	134x88x54mm	0.8kg
S-8082S	V-mount	14.4V	95Wh / 6.6Ah	50W, 3.5A	134x88x52mm	0.8kg
S-8110A	Gold mount	14.4V	126Wh / 8.8Ah	100W, 8A	165x90x53mm	0.9kg
S-8110S	V-mount	14.4V	126Wh / 8.8Ah	100W, 8A	165x90x51mm	0.9kg
S-8160A	Gold mount	14.4V	190Wh / 13.2Ah	100W, 8A	165x90x68mm	1.3kg
S-8160S	V-mount	14.4V	190Wh / 13.2Ah	100W, 8A	165x90x66mm	1.3kg
S-8180A	Gold mount	14.4V	220Wh / 15.3Ah	150W, 12A	165x90x68mm	1.3kg
S-8180S	V-mount	14.4V	220Wh / 15.3Ah	150W, 12A	165x90x66mm	1.3kg
S-8056N	NP-1	14.4V	73Wh / 5.1Ah	50W, 3.5A	185x72x25mm	0.69kg



D-tap output



5V/1A USB output

S-8U63 63Wh

- ◆ Completely compatible with SONY PMW-100/200/300, F3, EX1/1R/3
- ◆ Display remaining power in viewfinder
- ◆ D-tap DC output socket
- ◆ 5V/1A USB-A type power output for mobile phones
- ◆ 4-level LED power indicator
- ◆ Multiple circuit protections



S-8972 47Wh

- ◆ Comparable to SONY L series DV batteries
- ◆ Display remaining power in viewfinder
- ◆ 7.2V pole DC output socket (S-8972)
- ◆ 4-level LED power indicator (S-8972)
- ◆ Multiple circuit protections



S-8970 47Wh



S-8770 31Wh



S-8M91 32Wh

- ◆ Comparable to SONY QM series DV batteries
- ◆ Display remaining power in viewfinder
- ◆ Multiple circuit protections



S-8M71 21Wh



S-8D62 47Wh

- ◆ Comparable to Panasonic CGA series DV batteries
- ◆ 7.2V pole DC output socket
- ◆ 4-level LED power indicator
- ◆ Multiple circuit protections



S-8BG6 36Wh

- ◆ Comparable to Panasonic VW-VBG6 DV battery
- ◆ Display remaining power in viewfinder
- ◆ 7.2V pole DC output socket
- ◆ 4-level LED power indicator
- ◆ Multiple circuit protections



S-8I50 47Wh

- ◆ Comparable to JVC SSL-JVC50 DV battery
- ◆ Display remaining power in viewfinder
- ◆ 7.2V pole DC output socket
- ◆ 5V/1A USB-A type power output for mobile phones
- ◆ 4-level LED power indicator
- ◆ Multiple circuit protections



S-8823 18Wh

- ◆ Comparable to JVC BN-VF823 DV battery
- ◆ Display remaining power in viewfinder
- ◆ 7.2V pole DC output socket
- ◆ 4-level LED power indicator
- ◆ Multiple circuit protections



S-8428 21Wh

- ◆ Comparable to JVC BN-V428U DV battery
- ◆ Multiple circuit protections



S-8845 47Wh

- ◆ Comparable to Canon BP series DV batteries
- ◆ 7.2V pole DC output socket (S-8845)
- ◆ 4-level LED power indicator (S-8845)
- ◆ Multiple circuit protections



S-8945 47Wh



S-8PE6 10Wh

- ◆ Comparable to Canon LP-E6 DSLR battery
- ◆ Display remaining power percentage in Canon DSLR
- ◆ Multiple circuit protections

Specifications:

Model	Compatible camera	Comparable battery	Nominal voltage	Capacity	Max output	Dimension	Weight
S-8U63	SONY EX1/1R/3/F3, PMW-100/200/300	SONY BP-U60/U30	14.4V	63Wh / 4.4Ah	50W, 3.5A	42x70x97mm	0.40kg
S-8972	SONY DSR-PD190			47Wh / 6.6Ah		71x39x70mm	0.3kg
S-8970	SONY HVR-V1/Z1/Z7	SONY NP-F970/770	7.2V	47Wh / 6.6Ah	30W, 4A	71x39x60mm	0.28kg
S-8770	SONY HVR-HD1000E			31Wh / 4.4Ah		71x39x40mm	0.19kg
S-8M91	SONY HVRA1E	SONY NP-QM91/71	7.2V	32Wh / 4.5Ah	30W, 4A	56x38x60mm	0.22kg
S-8M71	SONY DSR-PDX10			21Wh / 3Ah		56x38x40mm	0.15kg
S-8D62	Panasonic AG-DVX100, DVC180A Panasonic AG-HVX200/201	Panasonic CGA-D54S/D28S	7.2V	47Wh / 6.6Ah	30W, 4A	66x37x82mm	0.3kg
S-8BG6	Panasonic AG-HMC71/151, AF101	Panasonic VW-VBG6	7.2V	36Wh / 5.1Ah	30W, 4A	65x36x81mm	0.24kg
S-8I50	JVC GY-HM600/650	JVC SSL-JVC50	7.2V	47Wh / 6.6Ah	40W, 5.5A	76x70x43mm	0.3kg
S-8823	JVC GY-HM100/101	JVC BN-VF823	7.2V	18Wh / 2.5Ah	15W, 2A	53x32x72mm	0.13kg
S-8428	JVC GY-HD100/101	JVC BN-V428U	7.2V	21Wh / 3Ah	30W, 4A	55x37x55mm	0.18kg
S-8845	Canon XF100/105, EOS-C300		7.2V	47Wh / 6.6Ah	30W, 4A	71x38x70mm	0.3kg
S-8945	Canon XF300/305, 100/105, EOS-C300 Canon XM1/2, XL1/2, XH-A1/G1/H1	Canon BP-945/970G	7.2V	47Wh / 6.6Ah	30W, 4A	71x38x57mm	0.29kg
S-8PE6	Canon EOS 5DII, 7D	Canon LP-E6	7.2V	10Wh / 1.5Ah	25W, 3.5A	57x39x22mm	0.072kg



About SWIT Chargers

■ Introduction

To get the best charging and optimizing of SWIT batteries, we suggest using SWIT chargers. We have the full series of chargers for all our batteries, V-mount, Gold mount, NP-1 style and various DV batteries. The chargers can identify different chemical cells, and offer the right charging method. After fully charged, the chargers will cut off power automatically for safety reasons.

We provide 4-ch simultaneous charger, 2-ch simultaneous charger, 2-ch sequential charger, portable single channel charger, and AC-DC adaptor function, discharging function for different using conditions.

D-3004A/S 4-ch Simultaneous Gold/V-mount Charger



- 4-channel simultaneous charging
- 1-channel discharging
- 4-level LED charging indicators for each channel
- Self-identify Li-ion, Ni-MH batteries

D-3004A: for Gold mount batteries

D-3004S: for V-mount batteries

Power	MAX 200W
Input	AC 100V-240V, 50/60Hz
Output	DC 15V-20V, 2Ax4
Dimension	285x144x173mm
Weight	3.5kg

S-3802A/S 2-ch Sequential Gold/V-mount Charger and Adaptor



- 2-channel sequential charging
 - 1-channel 4-pin XLR DC output
 - Self-identify Li-ion, Ni-MH batteries
- S-3802A: for Gold mount batteries**
S-3802S: for V-mount batteries

* S-7102 4-pin XLR male to female DC cable included.

Input	AC 100V-240V, 50/60Hz
Charging output	DC 14V-20V, 1.9A
Adapting output	DC 13.8V, 3.6A
Dimension	228x140x86mm
Weight	0.9kg

SC-302A/S 2-ch Sequential Gold mount / V-mount Charger



- 2-channel sequential charging
 - Self-identify Li-ion, Ni-MH batteries
- SC-302A: for Gold mount batteries**
SC-302S: for V-mount batteries

Input	AC 100V-240V, 50/60Hz
Output	DC 14V-20V, 1.9A
Dimension	228x140x86mm
Weight	0.85kg

SC-304A/S 2-ch Simultaneous Gold/V-mount Charger

- 2-channel simultaneous charging
- Self-identify Li-ion, Ni-MH batteries
- **SC-304A:** for Gold mount batteries
- **SC-304S:** for V-mount batteries



Input	Output	Dimension	Weight
AC 100V-240V, 50/60Hz	DC 14V-20V, 1.9A x2	223x230x66mm	1.6kg

SC-302 2-ch sequential NP-1 Charger

- 2-channel sequential charging
- Self-identify Li-ion, Ni-MH batteries
- **SC-302:** for NP-1 style batteries



Input	Output	Dimension	Weight
AC 100V-240V, 50/60Hz	DC 14V-20V, 1.9A	215x115x55mm	0.85kg

S-3010A/S/B Portable single channel Gold/V-mount Charger

- Ultra portable single channel charger
- Directly connect to the pins of battery
- **S-3010A:** for Gold mount batteries
- **S-3010S:** for V-mount batteries
- **S-3010B:** for the batteries with D-tap socket



Input	Output	Dimension	Weight
AC 100V-240V, 50/60Hz	DC 14V-16.8V, 1.8A	120x60x38mm	0.25kg

S-3010D Portable single channel DV Charger

- Ultra portable single channel charger
- Charging through 7.2V pole DC socket
- **S-3010D:** for 7.2V DV batteries with pole DC socket:
- S-8972, S-8D62, S-8845, S-8BG6, S-8823, S-8I50, S-8040



Input	Output	Dimension	Weight
AC 100V-240V, 50/60Hz	DC 8.4V, 1.2A	50x75x27mm	0.2kg

S-3602U 2-ch Intelligent DV Charger and Adaptor

- Charge 2 batteries sequentially to 60% capacity, and then charge both batteries to full simultaneously
- 1-channel pole DC adapting
- **S-3602U:** for S-8U63, S-8U62, SONY BP-U60/U30



Input	Charging output	Adapting output	Dimension	Weight
AC 100V-240V, 50/60Hz	DC 16.7V, 1.9A	DC 12V, 1.9A	136x110x53mm	0.38kg

S-3602F/P/J/C/M/B/V/I 2-ch Simultaneous DV Charger and Adaptor

- 2-channel simultaneous charging
- 2-channel simultaneous pole DC adapting
- **S-3602F:** for S-8972, S-8970, S-8770, SONY NP-F970/770
- **S-3602P:** for S-8D62, Panasonic CGA-D54S/D28S
- **S-3602J:** for S-8428, JVC BN-V428U
- **S-3602C:** for S-8845, S-8945, Canon BP-945/970G
- **S-3602M:** for S-8M91, S-8M71, SONY NP-QM91/71
- **S-3602B:** for S-8BG6, Panasonic VW-VBG6
- **S-3602V:** for S-8823, JVC BN-VF823
- **S-3602I:** for S-8I50, JVC SSL-JVC50



Input	Charging output	Adapting output	Dimension	Weight
AC 100V-240V, 50/60Hz	DC 8.4V, 2A x2	DC 8.4V, 4A	136x110x47mm	0.36kg

S-4310 Power Distribution Adaptor for Shoulder Rig

- V-mount battery power input
- 2x7.2V pole DC output
- 1x14.4V D-tap DC output
- Build-in HDMI 1 to 2 distribution
- Standard 15mm/60mm rods application



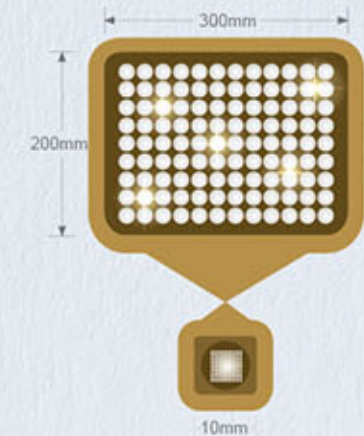
Input voltage	Output voltage	HDMI input	HDMI out	Fit rod size	Dimension	Net weight
DC 14.4V, V-mount battery	Pole DC 7.2V x2 D-tap DC 14.4V x1	1 standard HDMI input	2 standard HDMI output	15mm / 60mm	200x121x39mm	0.67kg

Charging time chart of SWIT batteries & chargers (for reference)

	Charge Positions	Charge Type	S-8192A/S 184Wh	S-8172A/S 158Wh	S-8132A/S 126Wh	S-8210A/S 115Wh	S-8260A/S 172Wh	S-8080A/S S-8082A/S 95Wh	S-8110A/S D-8111R 126Wh	S-8160A/S D-8161A/S/R 190Wh
S-3802A/S	2	Sequential	7h 20m	6h 20m	4h 45m	4h 40m	7h 05m	3h 30m	4h 45m	7h 40m
SC-302A/S	2	Sequential	7h 20m	6h 20m	4h 45m	4h 40m	7h 05m	3h 30m	4h 45m	7h 40m
SC-304A/S	2	Simultaneous	7h 20m	6h 20m	4h 45m	4h 40m	7h 05m	3h 30m	4h 45m	7h 40m
D-3004A/S	4	Simultaneous	7h 20m	6h 10m	4h 40m	4h 35m	7h	3h 30m	4h 40m	7h 40m
S-3010A/S	1	---	8h 10m	7h 40m	5h 45m	5h 40m	7h 50m	4h 20m	5h 45m	8h 25m
S-3010B	1	---	8h 10m	7h 40m	5h 45m	5h 40m	7h 50m	4h 20m	5h 45m	8h 25m
	Charge Positions	Charge Type	S-8056N 73Wh	S-8U63 63Wh	S-8U62 63Wh	S-8972 47Wh	S-8970 47Wh	S-8770 31Wh	S-8M91 32Wh	S-8M71 21Wh
SC-302	2	Simultaneous	3h 15m	---	---	---	---	---	---	---
S-3602U	2	Intelligent	---	2h 50m	2h 50m	---	---	---	---	---
S-3602F	2	Simultaneous	---	---	---	4h 30m	4h 30m	2h 50m	---	---
S-3602M	2	Simultaneous	---	---	---	---	---	---	3h	2h 30m
S-3010D	1	---	---	---	---	7h	---	---	---	---
S-3010B	1	---	---	3h 5m	3h 5m	---	---	---	---	---
	Charge Positions	Charge Type	S-8D62 73Wh	S-8BG6 36Wh	S-8845 47Wh	S-8945 47Wh	S-8I50 47Wh	S-8823 18Wh	S-8428 21Wh	S-8040 21Wh
S-3602P	2	Simultaneous	4h 30m	---	---	---	---	---	---	---
S-3602B	2	Simultaneous	---	3h 20m	---	---	---	---	---	---
S-3602C	2	Simultaneous	---	---	4h 30m	4h 30m	---	---	---	---
S-3602I	2	Simultaneous	---	---	---	---	4h 30m	---	---	---
S-3602V	2	Simultaneous	---	---	---	---	---	2h	---	---
S-3602J	2	Simultaneous	---	---	---	---	---	---	2h 30m	---
S-3010D	1	---	7h	5h 30m	7h	---	7h	3h	---	4h 20m



LED has taken place of Halogen bulb at broadcast on-camera light since several years ago for its high efficient output, low power consumption and long life. However, due to the obvious disadvantage of glaring, multiple shadows and shining, people are still thinking of the Halogen bulb that can feed soft light.



Integrate traditional LED array into a chip

NOW SWIT has brought out the new LED technology into on-camera lighting, called **Chip Array LED** light, which integrates the LEDs into a chip with high brightness output but in smaller size, and the most remarkable, it offers a equally spread, soft, glareless light similar to the traditional Halogen bulb light.

The traditional LED array always generates several highlight pots on retina and people will feel glaring, even can't recover sights until a few seconds. In comparison, the SWIT Chip Array LED light has only one bulb in appearance, and adopts the reflective bowl to output a glareless light.

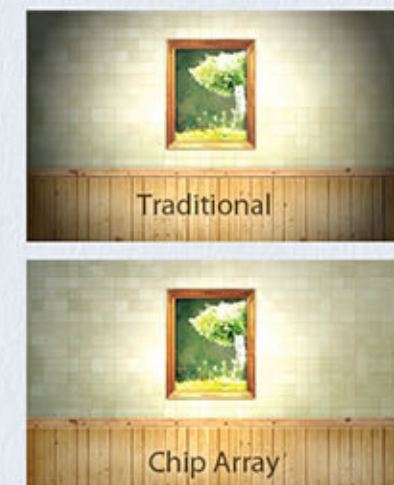


No highlight spots on retina, suitable for close interview

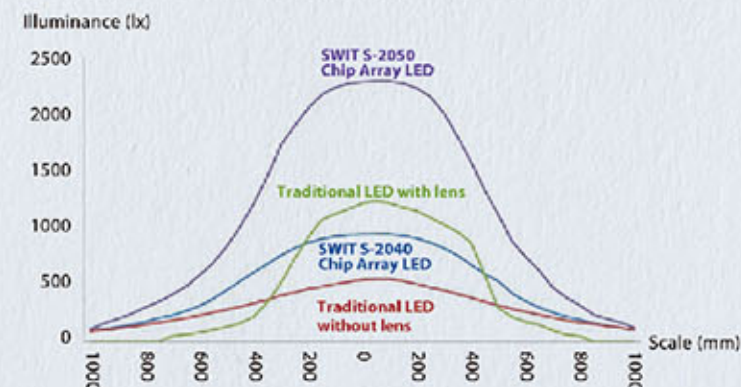
Single shadow

Brightness and beam angle test:

The traditional LED lights use lens to converge and get a higher brightness, as a result, the effective lighting scale is limited. Normally if the illuminance drops to a half, it is considered ineffective lighting scale. So according to the illuminance-scale chart, in 1 meter lighting distance, the traditional lens converged LED light has only 600mm diameter scale, about 33° beam angle, while SWIT chip array LED light covered 1000mm diameter scale, about 55° beam angle. Moreover, the lens converged light has higher brightness in the center, but dropped down quickly around, which will generate a visible lighting border in the image and that is unbearable for cameras.



Wider beam angle;
No visible edge





S-2050 Chip Array LED On-camera Light

- Chip Array LED technology
- 48W, 2200lx @ 1m distance and 1m diameter scale
- No highlight spots on retina, soft and glareless light
- 50° wide beam angle, equally spread
- Single shadow
- 5000K color temperature, with 5600K/3200K filter
- Controllable dimmer
- D-tap power supply
- Cool touch and light weight
- Cold shoe and screw installation

S-2040 Chip Array LED On-camera Light

- Chip Array LED technology
- 23W, 900lx @ 1m distance and 1m diameter scale
- No highlight spots on retina, soft and glareless light
- 50° wide beam angle, equally spread
- Single shadow
- 5000K color temperature, with 5600K/3200K filter
- Controllable dimmer
- 6-17V wide input voltage, D-tap power or DV battery power
- Cool touch and light weight
- Snap-on and interchangeable DV mount
- Cold shoe and screw installation

Optional Power Supply



S-8040
Rechargeable Li-ion battery
Specially designed, slim and compact
7.2V, 3Ah, 21Wh
4-level power indicator
(optional purchase)

① By S-8040 (Only S-2040)



S-7004F	SONY NP-970
S-7004P	Panasonic D54S
S-7004J	JVC BN-V428U
S-7004C	Canon BP-94S
S-7004U	SONY BP-U60
S-7004E	Canon DSLR LP-E6
S-7004B	Panasonic VW-VBG6
S-7004V	JVC BN-VF823
S-7004I	JVC SSL-JVC50

② By DV batteries (Only S-2040) Different kinds of DV batteries supported, by selecting an S-7004 snap-on battery mount (optional request)



14.4V D-tap power input

③ By D-tap power (Both S-2050 & S-2040)

Model	S-2050	S-2040
Input	DC11V-17V	DC 6V-17V
Power	≤48W	≤23W
Beam angle	Approx. 50°	Approx. 50°
Illuminance	2200 lx @ 1 meter	900 lx @ 1 meter
Color temp.	5000K itself, with 5600K&3200K filter	
Dimension	103x157x84mm	
Weight	0.5kg	



S-2000 On-camera LED Light

- 4 advanced LEDs
- 10-17V D-tap power supply
- 12W power consumption
- Equivalent to 40W halogen bulb
- 1100Lx @ 1meter, center
- 5600K color temperature
- 3200K filter, diffuser, barn door
- Controllable dimmer
- Cold shoe and screw installation



D-tap power supply

Model	S-2000
Input	DC 10V-17V
Power	≤12W
Illuminance	1100 lx @ 1 meter
Color temp.	5600K with 3200K filter
Dimension	100x75x60mm
Weight	0.27kg



S-2010 On-camera LED Light

- 4 advanced LEDs
- 6-9V Pole DC power supply
- 12W power consumption
- Equivalent to 40W halogen bulb
- 1100Lx @ 1meter, center
- 5600K color temperature
- 3200K filter, diffuser, barn door
- Controllable dimmer
- Cold shoe and screw installation



Pole DC power supply

Model	S-2010
Input	DC 6V-9V
Power	≤12W
Illuminance	1100 lx @ 1 meter
Color temp.	5600K with 3200K filter
Dimension	100x75x60mm
Weight	0.27kg

LED panel light

SWIT LED panel lights are composed of ultra bright and low power consumption LEDs, featuring high CRI and stable color temperature. With the high intensity technische thermoplaste shell, the lights are ultra lightweight and portable, which makes it perfect for studio lighting.



1024 LEDs | S-2120D Daylight

S-2120DA/S Daylight LED Panel

- Small-sized, light-weighted, easy to carry
- Dimmable 10%-100%, flicker-free
- Touch-screen LCD controller and rotary knobs for dimming
- 5100lx @ 1 meter
- 50,000 hrs long life ultra bright LEDs
- Power by Gold mount batteries, V-mount batteries or supplied AC adapter

S-2120DA: Gold mount plate
S-2120DS: V-mount plate



576 LEDs | S-2110D Daylight

S-2110DA/S Daylight LED Panel

- Small-sized, light-weighted, easy to carry
- Dimmable 10%-100%, flicker-free
- Touch-screen LCD controller and rotary knobs for dimming
- 3200lx @ 1 meter
- 50,000 hrs long life ultra bright LEDs
- Power by Gold mount batteries, V-mount batteries or supplied AC adapter

S-2110DA: Gold mount plate
S-2110DS: V-mount plate



1024 LEDs | S-2120C Bi-color

S-2120CA/S Bi-Color LED Panel

- Small-sized, light-weighted, easy to carry
- Dimmable 10%-100%, flicker-free
- Touch-screen LCD controller and rotary knobs for dimming and color temperature adjustment
- 3200K: 2500Lux/m, 5600K: 2600Lux/m
- 50,000 hrs long life ultra bright LEDs
- Power by Gold mount batteries, V-mount batteries or supplied AC adapter

S-2120CA: Gold mount plate
S-2120CS: V-mount plate



576 LEDs | S-2110C Bi-color

S-2110CA/S Bi-Color LED Panel

- Small-sized, light-weighted, easy to carry
- Dimmable 10%-100%, flicker-free
- Touch-screen LCD controller and rotary knobs for dimming and color temperature adjustment
- 3200K: 1500Lux/m, 5600K: 1600Lux/m
- 50,000 hrs long life ultra bright LEDs
- Power by Gold mount batteries, V-mount batteries or supplied AC adapter

S-2110CA: Gold mount plate
S-2110CS: V-mount plate

Specifications:

	S-2110DA	S-2110DS	S-2110CA	S-2110CS	S-2120DA	S-2120DS	S-2120CA	S-2120CS
LED	576pcs of ultra bright LEDs				1024pcs of ultra bright LEDs			
Luminance	3200Lux/m		3200K: 1500Lux/m 5600K: 1600Lux/m		5100Lux/m		3200K: 2500Lux/m 5600K: 2600Lux/m	
Beam angle	60°				60°			
Color temperature	5600K or 3200K by filter		3200K-5600K continuously adjustable		5600K or 3200K by filter		3200K-5600K continuously adjustable	
Power	< 40W				< 70W			
Working voltage	DC 11-17V, 4-pin XLR socket				DC 11-17V, 4-pin XLR socket			
External power	Gold mount plate	V-lock mount plate	Gold mount plate	V-lock mount plate	Gold mount plate	V-lock mount plate	Gold mount plate	V-lock mount plate
Dimension	403(W)x300(H)x95(D)mm				403(W)x450(H)x95(D)mm			
Weight	1.9kg				2.7kg			



S-2100A/S Color temperature adjustable

- ◆ Designed for on-site shooting and field studio setup
- ◆ 48 LEDs, 75W power consumption
- ◆ Equivalent to 500W halogen light
- ◆ 5500 Lux @ 1 meter
- ◆ 3200K to 5600K continuous adjustable
- ◆ 60° wide beam angle
- ◆ Infrared remote control
- ◆ AC-DC adaptor power or Gold/V-mount battery power

S-2100A: Gold mount plate
S-2100S: V-mount plate



S-2101A/S Constant Color temperature

- ◆ Designed for on-site shooting and field studio setup
- ◆ 48 LEDs, 75W power consumption
- ◆ Equivalent to 500W halogen light
- ◆ 5000 Lux @ 1 meter
- ◆ Constant 3200K color temperature
- ◆ 60° wide beam angle
- ◆ Infrared remote control
- ◆ AC-DC adaptor power or Gold/V-mount battery power

S-2101A: Gold mount plate
S-2101S: V-mount plate

S-2102A/S Constant Color temperature

- ◆ Designed for on-site shooting and field studio setup
- ◆ 48 LEDs, 75W power consumption
- ◆ Equivalent to 500W halogen light
- ◆ 5500 Lux @ 1 meter
- ◆ Constant 5600K color temperature
- ◆ 60° wide beam angle
- ◆ Infrared remote control
- ◆ AC-DC adaptor power or Gold/V-mount battery power

S-2102A: Gold mount plate
S-2102S: V-mount plate

Specifications:

	S-2100A	S-2100S	S-2101A	S-2101S	S-2102A	S-2102S
Input	DC 20V, 6A		DC 20V, 6A		DC 20V, 6A	
Power	75W		75W		75W	
Illuminance	5500Lx @ 1m		5000Lx @ 1m		5500Lx @ 1m	
Color temp.	3200K to 5600K		3200K		5600K	
Battery plate	Gold mount	V-mount	Gold mount	V-mount	Gold mount	V-mount
Dimension	300x220x50mm					
Weight	3.0kg with U shape support					



S-7301
Pan-tilt cold shoe / screw bracket



Dual monitors crane stand
S-7360: for S-1071 series monitors
S-7390: for S-1090 series monitors



S-7370
Articulating arm trestle
(15mm/60mm rod connection)



S-7380
Articulating arm trestle
(1/4" screw mount)



Battery mount plate with D-tap socket
S-7000A: Gold mount
S-7000S: V-mount



DV battery mount plate
S-7000F: SONY NP-F970/770
S-7000P: Panasonic D54S
S-7000J: JVC BN-V428U
S-7000C: Canon BP-945/970G
S-7000M: SONY NP-QM91/71
S-7000U: SONY BP-U60/30
S-7000B: Panasonic VW-VBG6
S-7000V: JVC BN-VF823
S-7000E: Canon LP-E6
S-7000L: JVC SSL-JVC50



Snap-on battery mount (only for S-1051C monitor)
S-7001F: SONY NP-F970/770
S-7001P: Panasonic D54S
S-7001J: JVC BN-V428U
S-7001C: Canon BP-945/970G
S-7001U: SONY BP-U60/30
S-7001B: Panasonic VW-VBG6
S-7001V: JVC BN-VF823
S-7001E: Canon LP-E6
S-7001L: JVC SSL-JVC50



Snap-on battery mount (for S-2040 and other monitors)
S-7004F: SONY NP-F970/770
S-7004P: Panasonic D54S
S-7004J: JVC BN-V428U
S-7004C: Canon BP-945/970G
S-7004U: SONY BP-U60/30
S-7004B: Panasonic VW-VBG6
S-7004V: JVC BN-VF823
S-7004E: Canon LP-E6
S-7004L: JVC SSL-JVC50



V-mount to Gold mount Battery Adapter
S-7005A:
◆ Adapts V-mount for Gold mount batteries
◆ D-tap DC output socket
◆ Smaller in size
◆ Stable and reliable connectivity



Gold mount to V-mount Battery Adapter
S-7005S:
◆ Adapts Gold mount for V-mount batteries
◆ D-tap DC output socket
◆ Smaller in size
◆ Stable and reliable connectivity



V-mount/Gold mount plate with clamp
S-7200A: Gold mount plate
S-7200S: V-mount plate
◆ D-tap output socket
◆ Clamp to lighting stand
◆ 13-35mm rod available
◆ Max load 5.5kg



Dummy battery adaptor with pole end cable connection for S-3602 series and S-4310
S-7500F: SONY NP-F970/770
S-7500P: Panasonic D54S
S-7500J: JVC BN-V428U
S-7500C: Canon BP-945/970G
S-7500U: SONY BP-U60/30
S-7500E: Canon DSLR LP-E6



S-7101
D-tap to 4-pin XLR cable
(2m length)



S-7102
4-pin XLR female to male cable,
Specially for S-3802A/S adaptor output
(3m length)



S-7103
D-tap open end cable
(0.6m length)



Gold mount / V-mount battery to 4-pin XLR cable
S-7100A: Gold mount to 4-pin XLR cable
S-7100S: V-mount to 4-pin XLR cable



S-7104
D-tap to pole end
(0.6m length)



S-7320
BNC video cable
(1.5m, 2m, 2.5m optional)



S-7107
Standard HDMI Cable (1.5m length)



S-7108
Pole to pole end (5.5mm) DC cable