

APRIL 2017 PRODUCT CATALOGUE



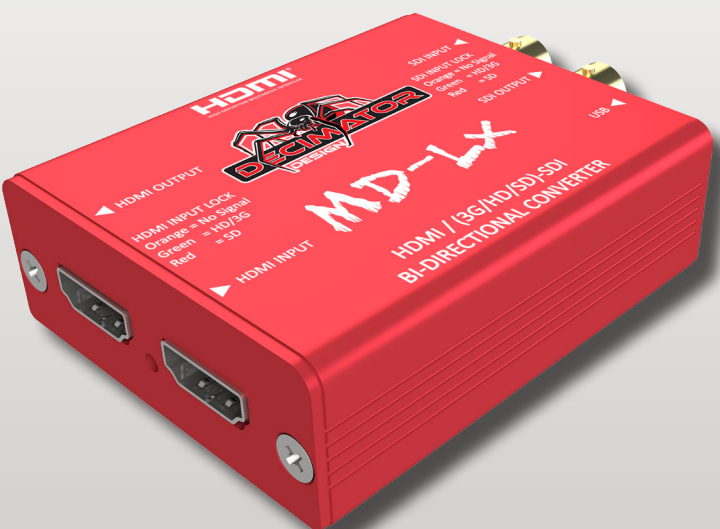
INNOVATIVE MONITORING SOLUTIONS

WWW.DECIMATOR.COM

DECIMATOR DESIGN is an Australian based company that is dedicated to designing high-quality video equipment for the digital age. Setting a precedence in quality, cost-efficient broadcasting equipment, at DECIMATOR DESIGN we take pride in our ability to design for the future. Already, we have our high-quality digital video equipment being used by some of the world's leading television stations. We are striving to create new and innovative broadcasting equipment that will set the standard for the way in which we view television.

MD-LX

HDMI / (3G/HD/SD)-SDI BI-DIRECTIONAL CONVERTER



- ### PRODUCT FEATURES
- Pocket sized at 60mm x 73.7mm x 23mm (2.4"x2.9"x0.9")
 - Features the following modes:
 1. Auto Select (Active input to all outputs or if both inputs are active SDI to HDMI and HDMI to SDI)
 2. HDMI IN to SDI OUT and SDI IN to HDMI OUT
 3. SDI IN to HDMI and SDI OUT
 4. HDMI IN to HDMI and SDI OUT
 - Supports 3G Level A and B and allowing for conversion between both
 - USB provides for power, control and firmware upgrades
 - Low power
 - This unit includes a Power Supply and USB Cable

SPECIFICATIONS

SDI FORMATS	3G-A or 3G-B: SMPTE 424M@2.97 and 2.967Gb/s • 1080p@60/59.94/50Hz HD:SMPTE 292M/274M/296M@1.485 and 1.435Gb/s • 1080i@60/59.94/50Hz • 1080p/psf@30/29.97/25/24/23.98Hz • 720p@60/59.94/50/30/29.97/25/24/23.98Hz SD:SMPTE 259M@270Mb/s • 625i50 (PAL) • 525i59.94 (NTSC)	HDMI FORMATS	• 1080p@60/59.94/50/30/29.97/25/24/23.98Hz • 1080i@60/59.94/50Hz • 720p@60/59.94/50/30/29.97/25 • 625i50 (PAL) • 525i59.94 (NTSC)
INPUTS	• 1 x HDMI Type A • 1 x (3G/HD/SD)-SDI • Micro USB for power, control and firmware updates	OUTPUTS	• 1 x HDMI Type A • 1 x (3G/HD/SD)-SDI
POWER	• USB Power +4.4V to +5.25V DC • Uses under 2.5 Watts	DIMENSIONS	60mm x 73.7mm x 23mm (2.4" x 2.9" x 0.9")

DMON-QUAD

**1 to 4 Channel MultiViewer/ Quad-Split
with SDI and HDMI outputs for 3G/HD/SD
+ Custom Layouts and Audio Meters**



PRODUCT FEATURES

- Low cost (3G/HD/SD)-SDI 1 to 4 MultiViewer or 4 to 1 input multiplexer
- Custom Layouts with various standard layouts
- 16 Character UMD overlay per window with individual enables, custom positioning and size
- 8 Channel Audio Metering overlay per window with individual enables, custom positioning and size
- Horizontal and/or Vertical image flipping per window
- Audio ID overlay
- Tallies can be applied to either Tally Boxes (Default) or Border
- Tally boxes allows for up to 4 Tallies per window
- Fast switching between inputs using Full-Screen scaling
- Selectable output format in both Full-Screen and MultiViewer mode
- Low latency buffering for each input allowing non-synchronous inputs
- Linked (3G/HD/SD)-SDI and HDMI outputs
- 4 x (3G/HD/SD)-SDI inputs with auto detection (29 Formats supported in total)
- Each quadrant is independent of the others, allowing any 3G/HD/SD format of any frame rate to be displayed simultaneously
- Variable aspect ratios per window
- In Pass-Through mode the selected input is passed through to both the (3G/HD/SD)-SDI and HDMI outputs
- The DMON-QUAD is a truly portable converter, that incorporates our easy to use LCD and button control system.
- This unit also includes:
 - GPI on RJ-45 for Tallies and Remote Switching
 - RS422/485 on RJ-45 for Dynamic UMD and Tallies using TSL protocol
 - USB port for control and firmware updates
 - Robust Aluminium box
 - Metal Thread Locking DC Power Socket
 - Power Supply, HDMI Cable and USB Cable

SPECIFICATIONS

SDI INPUT & OUTPUT FORMATS	3G-A or 3G-B: SMPTE 424M@2.97 and 2.967Gb/s <ul style="list-style-type: none"> • 1080p@60/59.94/50Hz HD:SMPTE 292M/274M/296M@1.485 and 1.435Gb/s <ul style="list-style-type: none"> • 1080i@60/59.94/50Hz • 1080p/psf@30/29.97/25/24/23.98Hz • 720p@60/59.94/50/30/29.97/25/24/23.98Hz SD:SMPTE 259M@270Mb/s <ul style="list-style-type: none"> • 625i50 (PAL) • 525i59.94 (NTSC) 	LCD / BUTTON MENU OPTIONS	<ul style="list-style-type: none"> • HDMI output type • Output Select • MultiViewer Output Format, Number of Windows, Layout, Audio Source • MultiViewer Reference • Full Screen is Scaled • Input Routing • GPI mode • Setup
HDMI OUTPUT FORMATS	<ul style="list-style-type: none"> • 1080p@60/59.94/50/30/29.97/25/24/23.98Hz • 1080i@60/59.94/50Hz • 720p@60/59.94/50/30/29.97/25 • 625i50 (PAL) • 525i59.94 (NTSC) 	INPUTS	<ul style="list-style-type: none"> • 4 x (3G/HD/SD)-SDI • USB for control and updates • GPI on RJ-45
POWER	<ul style="list-style-type: none"> • +5V to +32V DC • Positive Centre Pin 	OUTPUTS	<ul style="list-style-type: none"> • HDMI Type A • 1 x SDI (3G/HD/SD)-SDI
DIMENSIONS	79.5mm x 123mm x 29.5mm (3.1" x 4.8" x 1.2")		

MD-HX

MINIATURE HDMI / (3G/HD/SD)-SDI CROSS CONVERTER with Scaling and Frame Rate Conversion



PRODUCT FEATURES

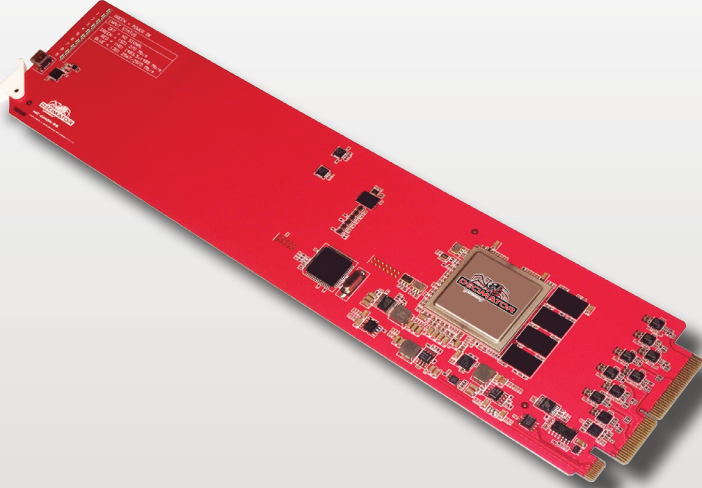
- Robust Aluminium Case
- Features the following modes:
 1. HDMI to SDI while simultaneously converting SDI to HDMI
 2. HDMI to HDMI while simultaneously converting SDI to SDI
 3. HDMI to SDI and HDMI
 4. SDI to SDI and HDMI
- Supports 3G Level A and B and allowing for conversion between both.
- Includes the same Down Up Cross Converter from our multi-award winning MD-DUCC, allowing either the HDMI or SDI input to be scaled and/or frame rate converted to the required standard.
- Horizontal and/or vertical flipping via the scaler.
- Includes 4 x (3G/HD/SD)-SDI outputs, that allow it to be used as a 1 to 4 distribution amplifier. Output pair 1 can either be a copy of the SDI input (default) or the same as pair 2.
- The audio pairs in the SDI and HDMI outputs can be rearranged as required.
- The MD-HX is a truly portable converter, that incorporates our easy to use LCD and button control system.
- This unit also includes:
 - USB port for control and firmware updates
 - Metal Thread Locking DC Power Socket
 - Power Supply, HDMI Cable and USB Cable

SPECIFICATIONS

SDI FORMATS	3G-A or 3G-B: SMPTE 424M@2.97 and 2.967Gb/s <ul style="list-style-type: none">• 1080p@60/59.94/50Hz HD:SMPTE 292M/274M/296M@1.485 and 1.435Gb/s <ul style="list-style-type: none">• 1080i@60/59.94/50Hz• 1080p/psf@30/29.97/25/24/23.98Hz• 720p@60/59.94/50/30/29.97/25/24/23.98Hz SD:SMPTE 259M@270Mb/s <ul style="list-style-type: none">• 625i50 (PAL)• 525i59.94 (NTSC)	LCD / BUTTON MENU OPTIONS	<ul style="list-style-type: none">• SDI output source from HDMI IN, SDI IN or Scaler• SDI output 1 is loop• HDMI output type and source from HDMI IN, SDI IN or Scaler• Scaler source, reference, format and Aspect Controls• Audio pair routing for HDMI and SDI output• LCD backlight off time• Back to Status time
HDMI FORMATS	<ul style="list-style-type: none">• 1080p@60/59.94/50/30/29.97/25/24/23.98Hz• 1080i@60/59.94/50Hz• 720p@60/59.94/50/30/29.97/25• 625i50 (PAL)• 525i59.94 (NTSC)	INPUTS	<ul style="list-style-type: none">• 1 x HDMI Type A• 1 x (3G/HD/SD)-SDI
POWER	<ul style="list-style-type: none">• +5V to +32V DC• Positive Centre Pin	OUTPUTS	<ul style="list-style-type: none">• 1 x HDMI Type A• 2 x (3G/HD/SD)-SDI Active Loop-through or addition outputs• 2 x (3G/HD/SD)-SDI
DIMENSIONS	79.5mm x 123mm x 29.5mm (3.1" x 4.8" x 1.2")		

MC-DMON-9S

1 to 9 Channel MultiViewer Card with Custom Layouts



PRODUCT FEATURES

- Low cost miniature (3G/HD/SD)-SDI 1 to 9 MultiViewer or 9 to 1 input multiplexer
- Custom Layouts with various standard layouts
- Supports 3G Level A and B and allowing for conversion between both.
- Connector on rear to allow for Dynamic UMD and Tallies using TSL protocol via RS485/422
- 16 Character UMD overlay per window with individual enables, custom positioning and size
- 16 Channel Audio Metering overlay per window with individual enables, custom positioning and size
- Format Status overlay per window with individual enables, custom positioning and size
- Safe Action and Safe Title overlay per window with individual enables and adjustment
- Centre Cross overlay per window with individual enable
- Audio ID overlay
- Fast switching between inputs using Full-Screen scaling
- Selectable output format in both Full-Screen and MultiViewer mode
- Low latency buffering for each input allowing non-synchronous inputs
- 9 x (3G/HD/SD)-SDI inputs with auto detection (26 Formats supported in total)
- Each window is independent of the others, allowing any 3G/HD/SD format of any frame rate to be displayed simultaneously
- Variable aspect ratios per window

SPECIFICATIONS

SDI INPUT & OUTPUT FORMATS	3G-A or 3G-B: SMPTE 424M@2.97 and 2.967Gb/s <ul style="list-style-type: none"> • 1080p@60/59.94/50Hz HD:SMPTE 292M/274M/296M@1.485 and 1.435Gb/s <ul style="list-style-type: none"> • 1080i@60/59.94/50Hz • 1080p/psf@30/29.97/25/24/23.98Hz • 720p@60/59.94/50/30/29.97/25/24/23.98Hz SD:SMPTE 259M@270Mb/s <ul style="list-style-type: none"> • 625i50 (PAL) • 525i59.94 (NTSC) 		
INPUTS	<ul style="list-style-type: none"> • 16 x (3G/HD/SD)-SDI • USB for updates • 3-pin header on rear for RS485/422 	OUTPUTS	<ul style="list-style-type: none"> • 1 x (3G/HD/SD)-SDI

DMON-16S

1 to 16 Channel MultiViewer
with SDI and
HDMI Outputs



PRODUCT FEATURES

- Low cost miniature (3G/HD/SD)-SDI 1 to 16 MultiViewer or 16 to 1 input multiplexer
- Custom Layouts with various standard layouts
- 16 Character UMD overlay per window with individual enables, custom positioning and size
- 8 Channel Audio Metering overlay per window with individual enables, custom positioning and size
- Safe Action and Safe Title overlay per window with individual enables and adjustment
- Centre Cross overlay per window with individual enable
- Audio ID overlay
- Tallies can be applied to either Tally Boxes (Default), Outside Safe Action Area or Border
- Tally boxes allows for up to 4 Tallies per window
- Fast switching between inputs using Full-Screen scaling
- Selectable output format in both Full-Screen and MultiViewer mode
- Low latency buffering for each input allowing non-synchronous inputs
- Linked (3G/HD/SD)-SDI and HDMI outputs
- 16 x (3G/HD/SD)-SDI inputs with auto detection (29 Formats supported in total)
- Each window is independent of the others, allowing any 3G/HD/SD format of any frame rate to be displayed simultaneously
- Variable aspect ratios per window
- In Pass-Through mode the selected input is passed through to both the (3G/HD/SD)-SDI and HDMI outputs
- The DMON-16S is a truly portable converter, that incorporates our easy to use LCD and button control system.
- This unit also includes:
 - 32 GPI on 37-pin D-SUB for Tallies and Remote Switching
 - RS422/485 on 37-pin D-SUB for Dynamic UMD and Tallies using TSL protocol
 - USB port for control and firmware updates
 - Robust Aluminium box
 - Metal Thread Locking DC Power Socket
 - Power Supply, HDMI Cable and USB Cable

SPECIFICATIONS

SDI INPUT & OUTPUT FORMATS	3G-A or 3G-B: SMPTE 424M@2.97 and 2.967Gb/s • 1080p@60/59.94/50Hz HD:SMPTE 292M/274M/296M@1.485 and 1.435Gb/s • 1080i@60/59.94/50Hz • 1080p/psf@30/29.97/25/24/23.98Hz • 720p@60/59.94/50/30/29.97/25/24/23.98Hz SD:SMPTE 259M@270Mb/s • 625i50 (PAL) • 525i59.94 (NTSC)	LCD / BUTTON MENU OPTIONS	• HDMI output type • Output Select • MultiViewer Output Format, Number of Windows, Layout, Audio Source • MultiViewer Reference • Full Screen is Scaled • Input Routing • GPI mode • Setup
HDMI OUTPUT FORMATS	• 1080p@60/59.94/50/30/29.97/25/24/23.98Hz • 1080i@60/59.94/50Hz • 720p@60/59.94/50/30/29.97/25 • 625i50 (PAL) • 525i59.94 (NTSC)	INPUTS	• 16 x (3G/HD/SD)-SDI • USB for control and updates • GPI on DSUB-37
POWER	• +12V DC • Positive Centre Pin	OUTPUTS	• HDMI Type A • 1 x SDI (3G/HD/SD)-SDI
DIMENSIONS	220mm x 103.7mm x 29.5mm (8.7" x 4.1" x 1.2")		

DMON-6S

1 to 6 Channel MultiViewer
with SDI and
HDMI Outputs



PRODUCT FEATURES

- Low cost (3G/HD/SD)-SDI 1 to 6 MultiViewer or 6 to 1 input multiplexer
- Custom Layouts with various standard layouts
- 16 Character UMD overlay per window with individual enables, custom positioning and size
- 16 Channel Audio Metering overlay per window with individual enables, custom positioning and size
- Safe Action and Safe Title overlay per window with individual enables and adjustment
- Centre Cross overlay per window with individual enable
- Audio ID overlay
- Tallies can be applied to either Tally Boxes (Default), Outside Safe Action Area or Border
- Tally boxes allows for up to 4 Tallies per window
- Fast switching between inputs using Full-Screen scaling
- Selectable output format in both Full-Screen and MultiViewer mode
- Low latency buffering for each input allowing non-synchronous inputs
- Linked (3G/HD/SD)-SDI and HDMI outputs
- 6 x (3G/HD/SD)-SDI inputs with auto detection (29 Formats supported in total)
- 6 x (3G/HD/SD)-SDI active loop copies of each input
- Each quadrant is independent of the others, allowing any 3G/HD/SD format of any frame rate to be displayed simultaneously
- Variable aspect ratios per window
- In Pass-Through mode the selected input is passed through to both the (3G/HD/SD)-SDI and HDMI outputs
- The DMON-6S is a truly portable converter, that incorporates our easy to use LCD and button control system.
- This unit also includes:
 - 32 GPI on 37-pin D-SUB for Tallies and Remote Switching
 - RS422/485 on 37-pin D-SUB for Dynamic UMD and Tallies using TSL protocol
 - USB port for control and firmware updates
 - Robust Aluminium box
 - Metal Thread Locking DC Power Socket
 - Power Supply, HDMI Cable and USB Cable

SPECIFICATIONS

SDI INPUT & OUTPUT FORMATS	3G-A or 3G-B: SMPTE 424M@2.97 and 2.967Gb/s • 1080p@60/59.94/50Hz HD:SMPTE 292M/274M/296M@1.485 and 1.435Gb/s • 1080i@60/59.94/50Hz • 1080p/psf@30/29.97/25/24/23.98Hz • 720p@60/59.94/50/30/29.97/25/24/23.98Hz SD:SMPTE 259M@270Mb/s • 625i50 (PAL) • 525i59.94 (NTSC)	LCD / BUTTON MENU OPTIONS	<ul style="list-style-type: none"> • HDMI output type • Output Select • MultiViewer Output Format, Number of Windows, Layout, Audio Source • MultiViewer Reference • Full Screen is Scaled • Input Routing • GPI mode • Setup
HDMI OUTPUT FORMATS	<ul style="list-style-type: none"> • 1080p@60/59.94/50/30/29.97/25/24/23.98Hz • 1080i@60/59.94/50Hz • 720p@60/59.94/50/30/29.97/25 • 625i50 (PAL) • 525i59.94 (NTSC) 	INPUTS	<ul style="list-style-type: none"> • 6 x (3G/HD/SD)-SDI • USB for control and updates • GPI on DSUB-37
POWER	<ul style="list-style-type: none"> • +12V DC • Positive Centre Pin 	OUTPUTS	<ul style="list-style-type: none"> • HDMI Type A • 6 x SDI (3G/HD/SD)-SDI Active Loop-throughs • 1 x SDI (3G/HD/SD)-SDI
DIMENSIONS	220mm x 103.7mm x 29.5mm (8.7" x 4.1" x 1.2")		

DMON-6S: 1 to 6 Channel MultiViewer with SDI and HDMI outputs

DMON-12S

1 to 12 Channel MultiViewer

with SDI and
HDMI Outputs

TVTechnology



PRODUCT FEATURES

- Low cost miniature (3G/HD/SD)-SDI 1 to 12 MultiViewer or 12 to 1 input multiplexer
- Custom Layouts with various standard layouts
- 16 Character UMD overlay per window with individual enables, custom positioning and size
- 16 Channel Audio Metering overlay per window with individual enables, custom positioning and size
- Safe Action and Safe Title overlay per window with individual enables and adjustment
- Centre Cross overlay per window with individual enable
- Audio ID overlay
- Tallies can be applied to either Tally Boxes (Default), Outside Safe Action Area or Border
- Tally boxes allows for up to 4 Tallies per window
- Fast switching between inputs using Full-Screen scaling
- Selectable output format in both Full-Screen and MultiViewer mode
- Low latency buffering for each input allowing non-synchronous inputs
- Linked (3G/HD/SD)-SDI and HDMI outputs
- 12 x (3G/HD/SD)-SDI inputs with auto detection (29 Formats supported in total)
- Each window is independent of the others, allowing any 3G/HD/SD format of any frame rate to be displayed simultaneously
- Variable aspect ratios per window
- In Pass-Through mode the selected input is passed through to both the (3G/HD/SD)-SDI and HDMI outputs
- The DMON-12S is a truly portable converter, that incorporates our easy to use LCD and button control system.
- This unit also includes:
 - 32 GPI on 37-pin D-SUB for Tallies and Remote Switching
 - RS422/485 on 37-pin D-SUB for Dynamic UMD and Tallies using TSL protocol
 - USB port for control and firmware updates
 - Robust Aluminium box
 - Metal Thread Locking DC Power Socket
 - Power Supply, HDMI Cable and USB Cable

SPECIFICATIONS

SDI INPUT & OUTPUT FORMATS	3G-A or 3G-B: SMPTE 424M@2.97 and 2.967Gb/s • 1080p@60/59.94/50Hz HD:SMPTE 292M/274M/296M@1.485 and 1.435Gb/s • 1080i@60/59.94/50Hz • 1080p/psf@30/29.97/25/24/23.98Hz • 720p@60/59.94/50/30/29.97/25/24/23.98Hz SD:SMPTE 259M@270Mb/s • 625i50 (PAL) • 525i59.94 (NTSC)	LCD / BUTTON MENU OPTIONS	• HDMI output type • Output Select • MultiViewer Output Format, Number of Windows, Layout, Audio Source • MultiViewer Reference • Full Screen is Scaled • Input Routing • GPI mode • Setup
HDMI OUTPUT FORMATS	• 1080p@60/59.94/50/30/29.97/25/24/23.98Hz • 1080i@60/59.94/50Hz • 720p@60/59.94/50/30/29.97/25 • 625i50 (PAL) • 525i59.94 (NTSC)	INPUTS	• 12 x (3G/HD/SD)-SDI • USB for control and updates • GPI on DSUB-37
POWER	• +12V DC • Positive Centre Pin	OUTPUTS	• HDMI Type A • 1 x SDI (3G/HD/SD)-SDI
DIMENSIONS	220mm x 103.7mm x 29.5mm (8.7" x 4.1" x 1.2")		

DMON-12S: 1 to 12 Channel MultiViewer with SDI and HDMI outputs

DMON-4S

Quad (3G/HD/SDI)-SDI to HDMI
MultiViewer and Converter +
Custom Layouts and
Audio Meters



PRODUCT FEATURES

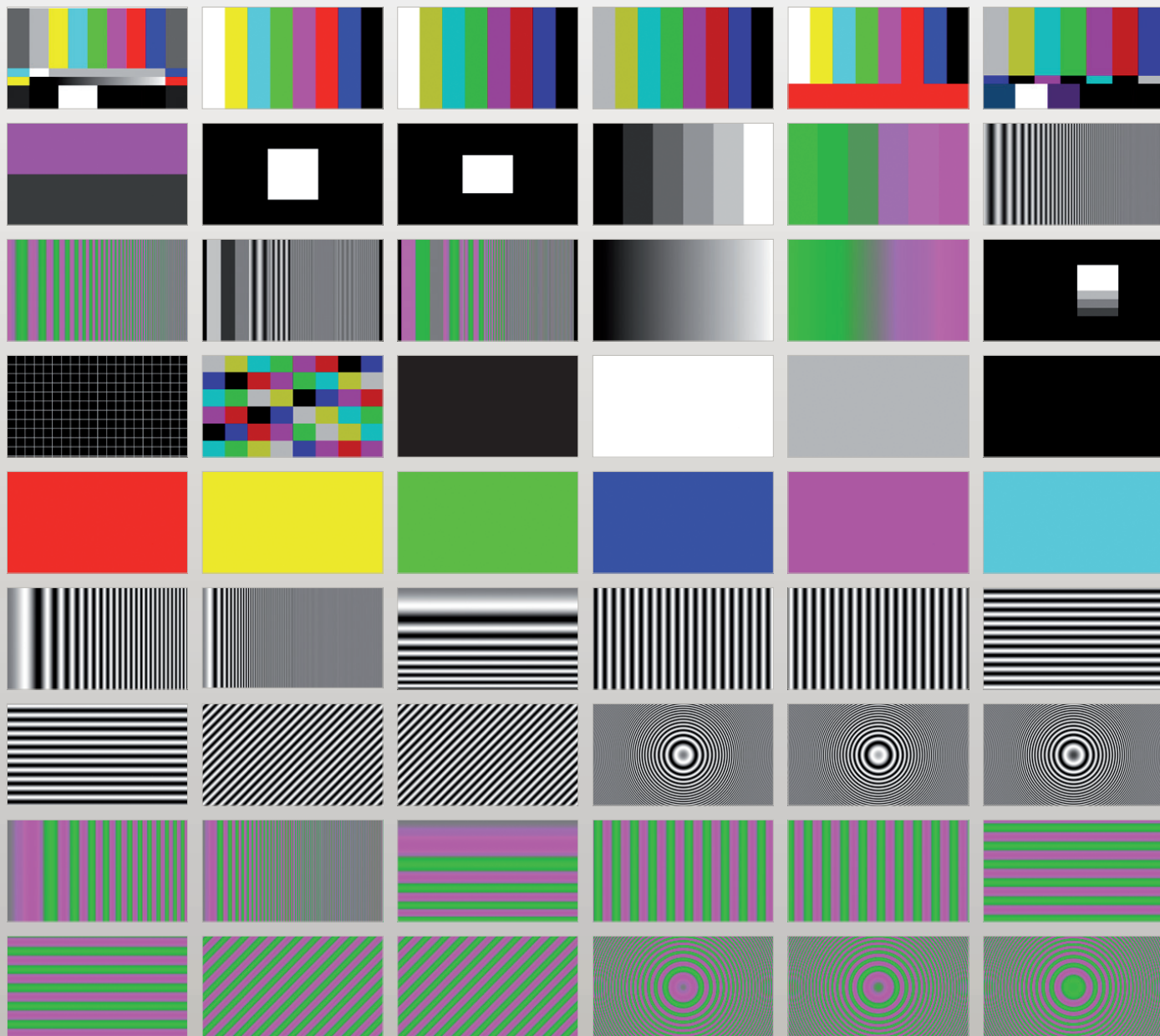
- Includes 4 independent mini HDMI outputs that can each output any of the four (3G/HD/SD)-SDI inputs or a MultiView of all them.
For example you could use the unit to have:
 - 4 independent SDI to HDMI converters
 - 3 independent SDI to HDMI converters with a MultiView output
 - 2 independent SDI to 2 x HDMI converters with loop through
 - A single SDI or MultiView to 4 x HDMI outputs
- Inputs 2 and 4 can be individually changed to output active loop copies of inputs 1 and 2 respectively.
- Support for both 3G level A and B on the inputs.
- MultiView mode offers:
 - Selection of audio from any input
 - Custom Layouts with various standard layouts
 - 16 Character UMD overlay per window with individual enables, custom positioning and size.
 - 8 Channel Audio Metering overlay per window with individual enables, custom positioning and size
 - Horizontal and/or Vertical image flipping per window
- The DMON-4S is a truly portable converter, that incorporates our easy to use LCD and button control system. This gives you easy access to all of the amazing features without using complicated LED/button control, dip switches or having to carry around a computer to change a simple setting.
- This unit also includes:
 - USB port for control and firmware updates
 - Heavy duty box
 - Metal Thread Locking DC Power Socket
 - Power Supply, HDMI Cable and USB Cable

SPECIFICATIONS

SDI FORMATS	3G-A or 3G-B: SMPTE 424M@2.97 and 2.967Gb/s <ul style="list-style-type: none"> • 1080p@60/59.94/50Hz HD:SMPTE 292M/274M/296M@1.485 and 1.435Gb/s <ul style="list-style-type: none"> • 1080i@60/59.94/50Hz • 1080p/psf@30/29.97/25/24/23.98Hz • 720p@60/59.94/50/30/29.97/25/24/23.98Hz SD:SMPTE 259M@270Mb/s <ul style="list-style-type: none"> • 625i50 (PAL) • 525i59.94 (NTSC) 	LCD / BUTTON MENU OPTIONS	<ul style="list-style-type: none"> • Status for all 4 inputs • HDMI output type and source selection from SDI inputs 1 to 4 • MultiView mode output format selection • MultiView mode reference
HDMI OUTPUT FORMATS	<ul style="list-style-type: none"> • 1080p@60/59.94/50/30/29.97/25/24/23.98Hz • 1080i@60/59.94/50Hz • 720p@60/59.94/50/30/29.97/25 • 625i50 (PAL) • 525i59.94 (NTSC) 	INPUTS	• 4 x (3G/HD/SD)-SDI 10-bit
POWER	<ul style="list-style-type: none"> • +5V to +32V DC • Positive Centre Pin 	OUTPUTS	• 4 x mini HDMI Type C
DIMENSIONS	79.5mm x 123mm x 29.5mm (3.1" x 4.8" x 1.2")		

DMON-4S: Quad (3G/HD/SD)-SDI to HDMI Multiviewer and Converter

54 Test Patterns are available in the MD-CROSS and MD-QUAD



MD-CROSS and MD-QUAD: Test Patterns

MD-CROSS

MINIATURE HDMI / SDI CROSS CONVERTER with Scaling,
Frame Rate Conversion, Overlays and Test Generator



TVTechnology



PRODUCT FEATURES

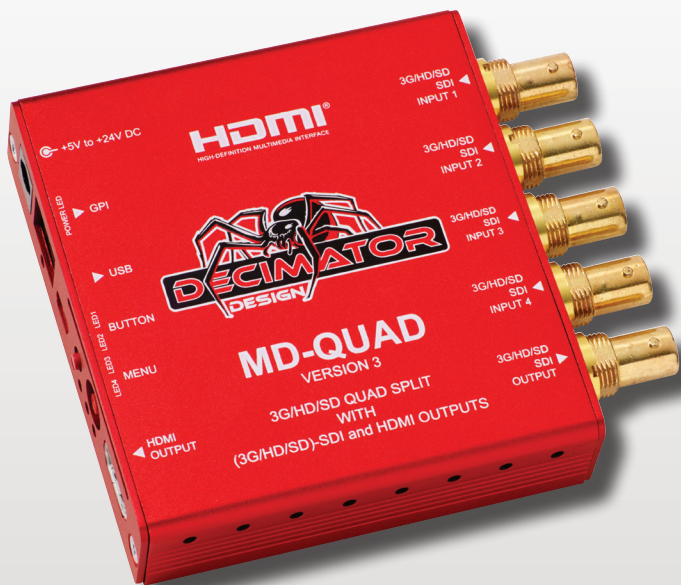
- Features the following four modes:
 1. HDMI to SDI while simultaneously converting SDI to HDMI
 2. HDMI to HDMI while simultaneously converting SDI to SDI
 3. HDMI to SDI and HDMI
 4. SDI to SDI and HDMI
- Professional 3G/HD/SD Test Pattern Generator featuring:
 - 29 Selectable Output Formats
 - 54 Test Patterns including Luma and Chroma Zone-plates
- Support 3G Level A and B and allowing for conversion between both.
- Includes the same Down Up Cross Converter from our multi-award winning MD-DUCC, allowing either the HDMI or SDI input to be scaled and/or frame rate converted to the required standard.
- Horizontal and/or vertical flipping via the scaler.
- The MD-CROSS is a truly portable converter, that incorporates a easy to use LCD and button control system. This gives you easy access to all of the amazing features that have been unavailable without a computer until now. The days of having to play with annoying dip switches or having to carry around a computer to change a simple setting are gone.
- This unit also includes:
 - (3G/HD/SD)-SDI Active Loop-Through Output
 - Full 16-Channel Audio Metering Overlays
 - Adjustable Safe Title and Safe Action Overlays and static Center Cross
 - Text Overlays
 - USB port for control and firmware updates
 - New Metal Thread Locking DC Power Socket
 - Power Supply, HDMI Cable and USB Cable

SPECIFICATIONS

SDI FORMATS	3G-A or 3G-B: SMPTE 424M@2.97 and 2.967Gb/s <ul style="list-style-type: none"> • 1080p@60/59.94/50Hz HD:SMPTE 292M/274M/296M@1.485 and 1.435Gb/s <ul style="list-style-type: none"> • 1080i@60/59.94/50Hz • 1080p/psf@30/29.97/25/24/23.98Hz • 720p@60/59.94/50/30/29.97/25/24/23.98Hz SD:SMPTE 259M@270Mb/s <ul style="list-style-type: none"> • 625i50 (PAL) • 525i59.94 (NTSC) 	LCD / BUTTON MENU OPTIONS	<ul style="list-style-type: none"> • SDI output source from HDMI IN, SDI IN, TPG or Scaler • HDMI output type and source from HDMI IN, SDI IN, TPG or Scaler • Scaler source, format and Aspect Controls • Control for Audio Meter Overlays • Control for Safe Action, Safe Title and Centre Cross Overlays • Control for Text Overlays • Control for Format Status Overlays
HDMI FORMATS	<ul style="list-style-type: none"> • 1080p@60/59.94/50/30/29.97/25/24/23.98Hz • 1080i@60/59.94/50Hz • 720p@60/59.94/50/30/29.97/25 • 625i50 (PAL) • 525i59.94 (NTSC) 	INPUTS	<ul style="list-style-type: none"> • HDMI • (3G/HD/SD)-SDI 10-bit • Conditional Maximum Equalization cable length of 400M for SDI, 200M for HD-SDI and 100M 3G-SDI using Belden 1694A
POWER	<ul style="list-style-type: none"> • +5V to +32V DC • Positive Centre Pin 	OUTPUTS	<ul style="list-style-type: none"> • HDMI • 1 x (3G/HD/SD)-SDI Active Loop-Through • 2 x (3G/HD/SD)-SDI 10-bit Outputs
DIMENSIONS	79.5mm x 123mm x 29.5mm (3.1" x 4.8" x 1.2")		

MD-QUAD

MINIATURE (3G/HD/SD)-SDI 1 to 4 MultiViewer with (3G/HD/SD)-SDI and HDMI Outputs



PRODUCT FEATURES

- Low cost (3G/HD/SD)-SDI 1 to 4 MultiViewer or 4 to 1 input multiplexer
- Custom Layouts with various standard layouts
- Horizontal and/or vertical image flipping per window
- 16 Character UMD overlay per window with individual enables, custom positioning and size
- 8 Channel Audio Metering overlay per window with individual enables, custom positioning and size
- Safe Action and Safe Title overlay per window with individual enables and adjustment
- Centre Cross overlay per window with individual enable
- Audio ID overlay
- Tallies can be applied to either Tally Boxes (Default), Outside Safe Action Area or Border
- Tally boxes allows for up to 4 Tallies per window
- Fast switching between inputs using Full-Screen scaling
- Selectable output format in both Full-Screen and MultiViewer mode
- Low latency buffering for each input allowing non-synchronous inputs
- Linked (3G/HD/SD)-SDI and HDMI outputs
- 4 x (3G/HD/SD)-SDI inputs with auto detection (29 Formats supported in total)
- Each quadrant is independent of the others, allowing any 3G/HD/SD format of any frame rate to be displayed simultaneously
- Variable aspect ratios per window
- In Pass-Through mode the selected input is passed through to both the (3G/HD/SD)-SDI and HDMI outputs
- The DMON-6S is a truly portable converter, that incorporates our new easy to use LCD and button control system.
- This unit also includes:
 - GPI on RJ-45 for Tallies and Remote Switching
 - RS422/485 on RJ-45 for Dynamic UMD and Tallies using TSL protocol
 - USB port for control and firmware updates
 - Robust Aluminium box
 - Metal Thread Locking DC Power Socket
 - Power Supply, HDMI Cable and USB Cable



SPECIFICATIONS

SDI FORMATS	3G-A or 3G-B: SMPTE 424M@2.97 and 2.967Gb/s <ul style="list-style-type: none"> • 1080p@60/59.94/50Hz HD:SMPTE 292M/274M/296M@1.485 and 1.435Gb/s <ul style="list-style-type: none"> • 1080i@60/59.94/50Hz • 1080p/psf@30/29.97/25/24/23.98Hz • 720p@60/59.94/50/30/29.97/25/24/23.98Hz SD:SMPTE 259M@270Mb/s <ul style="list-style-type: none"> • 625i50 (PAL) • 525i59.94 (NTSC) 	MENU OPTIONS	<ul style="list-style-type: none"> • Input status for all 4 inputs • Output format • Output selection of Quad Split or input 1, 2, 3 or 4. • Output aspect and type of 16:9 or 4:3 at either 90 or 100% of screen size • Individual aspect format for each input of Same as output, Letter-box or Pillar-box • Border Enable • Quad split mode reference of either Free-run or input 1
INPUTS	<ul style="list-style-type: none"> • 4 x 3G/HD/SD-SDI with Input Equalization > 100M using Belden 1694A • USB for control and updates • GPI on RJ-45 	OUTPUTS	<ul style="list-style-type: none"> • 1 x 10-bit (3G/HD/SD)-SDI Re-clocked • 1 x HDMI
LED STATUS	<ul style="list-style-type: none"> • Power • 4 x Signal lock and rate 	DIMENSIONS	90mm x 94mm x 23mm (3.5" x 3.7" x 0.9")
POWER	<ul style="list-style-type: none"> • +5V to +24V DC, approximately 6 Watts • Positive Centre Pin 		

QUAD-SPLIT: HDMI and (3G/HD/SD)-SDI OUTPUTS



MULTI-AWARD WINNING

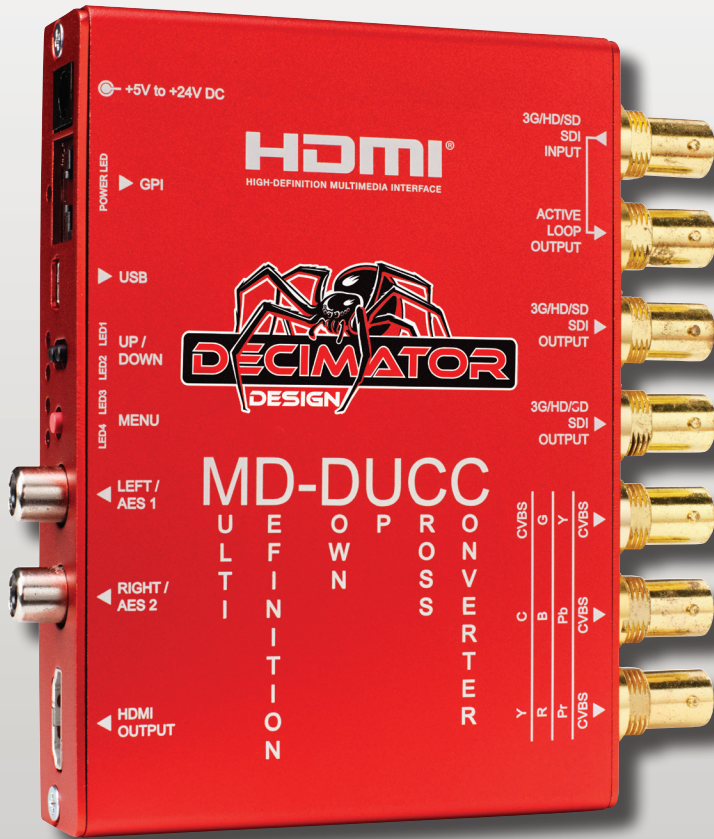
MD-DUCC



Multi-Definition Down Up Cross Converter
(3G/HD/SD)-SDI to (3G/HD/SD)-SDI, HDMI and Analogue Video with 2 x AES/EBU and 2 x Analogue Audio Outputs

PRODUCT FEATURES

- Auto detects 3G, HD or SD (26 Formats in total)
- Full 10-bit data path and multipoint interpolation
- Professional motion-adaptive de-interlacing
- True Down Up Cross conversion, allowing the conversion between any of the supported formats. Simply select the output format you require, no matter what the input format is
- Complete 16:9, 14:9 and 4:3 Aspect ratio conversion support, with individual selection for HD to HD, HD to SD, SD to HD and SD to SD conversions
- Support 3G Level A and B and allowing for conversion between both.
- Horizontal and/or vertical flipping via the scaler.
- Full 16-Channel Audio metering with:
 - Any of the 4 audio groups individually selectable
 - Vertical or Horizontal Bars
 - AES, VU, Extended VU, BBC, EBU, DIN and NORDIC Scales
 - Bar & Float, Bar only or Float only
 - Transparency adjustment
 - Separate Bar and Float Ballistics control
 - Adjustable Reference level
 - Red, Yellow and Green Range adjustment
 - Bar thickness adjustment
 - Margin adjustment
- Adjustable Graticules Generator with:
 - Separate enables for Safe Action, Safe Title and Centre Cross
 - Adjustable position for either Safe Action or Safe Title
 - Adjustable colours for Safe Action, Safe Title and Centre Cross
- Text Overlays with:
 - Adjustable Foreground and Background colours
 - Adjustable 16 character text
 - Current input format status
- HDMI output
- Selectable analog video from:
 - 3 x CVBS / YPbPr / RGB / CVBS & YC
- 2 x (3G/HD/SD)-SDI 10-bit outputs with audio from input automatically delayed and passed
- GPI on RJ-45 for Tallies
- 3G/HD/SD-SDI Active Loop-Through Output
- De-Embedded audio can be output on 2 x RCA connectors as either AES or Analogue with adjustable analogue audio level
- Buttons and LEDs for basic configuration
- USB port for control and firmware updates
- Locking DC Power Socket
- The following is also included with the unit:
 - Power Supply, HDMI Cable, USB Cable and Mounting Brack



SPECIFICATIONS

SDI FORMATS	3G-A or 3G-B: SMPTE 424M@2.97 and 2.967Gb/s • 1080p@60/59.94/50Hz HD:SMPTE 292M/274M/296M@1.485 and 1.435Gb/s • 1080i@60/59.94/50Hz • 1080p/psf@30/29.97/25/24/23.98Hz • 720p@60/59.94/50/30/29.97/25/24/23.98Hz SD:SMPTE 259M@270Mb/s • 625i50 (PAL) • 525i59.94 (NTSC)	MENU OPTIONS	<ul style="list-style-type: none"> • HDMI format type • Analogue Video format type • Output format • Aspect conversion type for HD to HD, HD to SD, SD to HD and SD to SD conversions. • On-Screen Overlays Enables • Basic Audio Meter control • Basic Graticule Enables
INPUTS	<ul style="list-style-type: none"> • (3G/HD/SD)-SDI 10-bit • Conditional Maximum Equalization cable length of 400M for SDI, 200M for HD-SDI and 100M 3G-SDI using Belden 1694A • GPI on RJ-45 	OUTPUTS	<ul style="list-style-type: none"> • HDMI • 1 x (3G/HD/SD)-SDI Active Loop-Through • 2 x (3G/HD/SD)-SDI 10-bit Outputs • (3 x CVBS) / (Y, Pb, Pr) / (G, B, R) / (CVBS, Y & C) • AES 1 / Unbalanced Analogue Audio - Left • AES 2 / Unbalanced Analogue Audio - Right
LED STATUS	<ul style="list-style-type: none"> • Power • Signal Lock 	DIMENSIONS	90mm x 123mm x 23mm (3.5" x 2.8" x 0.9")
POWER	<ul style="list-style-type: none"> • +5V to +24V DC, approximately 5 Watts • Positive Centre Pin 		

MD-DUCC : MULTI-DEFINITION DOWN UP CROSS CONVERTER

DECIMATOR 2

MINIATURE (3G/HD/SD)-SDI to both HDMI and NTSC/PAL Converter with Simultaneous Scaling on both outputs and De-Embedded Analogue Audio



PRODUCT FEATURES

- Auto detects 3G, HD or SD (26 Formats in total) and can handle switching of synchronous sources
- Simultaneous scaling on both the HDMI and Composite outputs with a maximum delay of 1 input frame
- HDMI output with optional full scaling and aspect ratio conversion
- Down-converted Composite output
 - NTSC or PAL is selectable for 3G/HD inputs
 - SD will be passed unchanged.
 - Low latency 3G/HD to SD Down-conversion with ARC (Aspect Ratio Conversion) of either:
 - i) 16:9 to 16:9 Anamorphic
 - ii) 16:9 to 4:3 Letterbox
 - iii) 16:9 to 4:3 Centre Cut (Crop to 4:3)
 - Full 10-bit data path and multipoint interpolation
 - 16 times over-sampling for Composite Output
- Passes EIA-708/608 Closed Captions to the Composite Output
- Full 16-Channel Audio metering displayed on the HDMI output
- De-Embedded Analogue Audio is output on 2 x RCA connectors at -10dBu = -20dBFS.
- 3G/HD/SD-SDI Active Loop-Through Output
- Adjustable Safe Action and Safe Title Overlays on HDMI output
- Centre Cross Overlay on HDMI output
- 16 Character Text Overlays displayed on the HDMI output
- Current input format status overlay displayed on the HDMI output
- External Dipswitch Configuration
- USB port for control and firmware updates
- Locking DC Power Socket
- The following is also included with the unit: Power Supply, HDMI Cable, USB Cable and Mounting Bracket

SPECIFICATIONS

SDI FORMATS	3G-A: SMPTE 424M@2.97 and 2.967Gb/s • 1080p@60/59.94/50Hz HD:SMPTE 292M/274M/296M@1.485 and 1.435Gb/s • 1080i@60/59.94/50Hz • 1080p/psf@30/29.97/25/24/23.98Hz • 720p@60/59.94/50/30/29.97/25/24/23.98Hz SD:SMPTE 259M@270Mb/s • 625i50 (PAL) • 525i59.94 (NTSC)	DIP SWITCH CONTROLS	• NTSC or PAL Selection • SD Pedestal • Crop 16:9 to 4:3 • 16:9 or 4:3 Aspect Selection • Stereo Pair selection for RCA Analogue Audio • HDMI Output format select
INPUTS	• (3G/HD/SD)-SDI 10-bit • Conditional Maximum Equalization cable length of 400M for SDI, 200M for HD-SDI and 100M 3G-SDI using Belden 1694A	OUTPUTS	• HDMI • SD-Composite • 1 x (3G/HD/SD)-SDI Active Loop-Through • 2 x RCA for De-embedded Analogue Audio (20dBFS=-10dBu)
LED STATUS	• Power • Signal Lock	DIMENSIONS	90mm x 71mm x 23mm (3.5" x 2.8" x 0.9")
POWER	• +5V to +24V DC, approximately 4 Watts • Positive Centre Pin		

DECIMATOR 2 : SDI to HDMI and Composite with De-embedded Analogue Audio

DMON-16SL

1 to 16 Channel MultiViewer
with HDMI Output



PRODUCT FEATURES

- Low cost miniature (3G/HD/SD)-SDI 1 to 16 MultiViewer
- Custom Layouts with various standard layouts
- Fixed Identifier overlay per window with individual enables, custom positioning and size
- Audio ID overlay
- Fast switching between inputs using Full-Screen scaling
- Selectable output format in both Full-Screen and Multi-Viewer mode
- Low latency buffering for each input allowing non-synchronous inputs
- HDMI output
- 16 x (3G/HD/SD)-SDI inputs with auto detection (26 Formats supported in total)
- Each window is independent of the others, allowing any 3G/HD/SD format of any frame rate to be displayed simultaneously
- Variable aspect ratios per window
- In Pass-Through mode the selected input is passed through to the HDMI output
- The DMON-16SL is a truly portable converter, that incorporates our new easy to use LCD and button control system. This gives you easy access to most of the amazing features without using complicated LED/button control, dip switches or having to carry around a computer to change a simple setting.
- This unit also includes:
 - USB port for control and firmware updates
 - Robust Aluminium box
 - Metal Thread Locking DC Power Socket
 - Power Supply, HDMI Cable and USB Cable

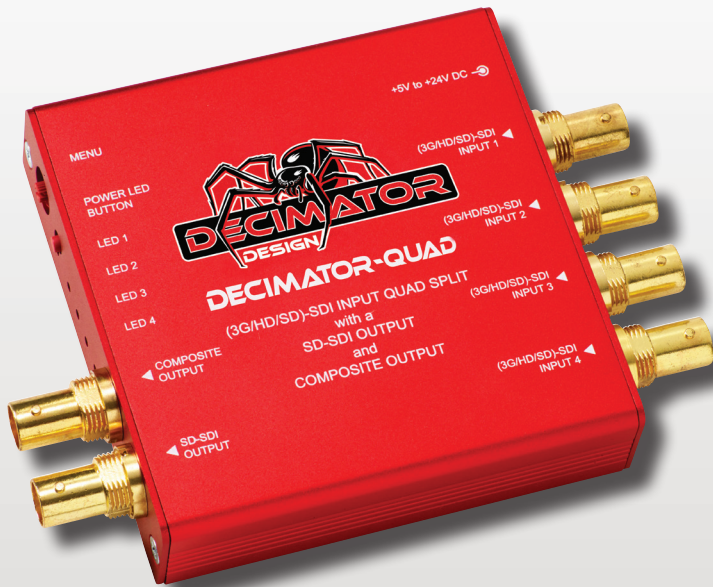
SPECIFICATIONS

SDI INPUT FORMATS	3G-A or 3G-B: SMPTE 424M@2.97 and 2.967Gb/s • 1080p@60/59.94/50Hz HD:SMPTE 292M/274M/296M@1.485 and 1.435Gb/s • 1080i@60/59.94/50Hz • 1080p/psf@30/29.97/25/24/23.98Hz • 720p@60/59.94/50/30/29.97/25/24/23.98Hz SD:SMPTE 259M@270Mb/s • 625i50 (PAL) • 525i59.94 (NTSC)	LCD / BUTTON MENU OPTIONS	• HDMI output type • Output Select • MultiViewer Output Format, Number of Windows, Layout, Audio Source • MultiViewer Reference • Full Screen is Scaled • Input Routing • GPI mode • Setup
HDMI OUTPUT FORMATS	• 1080p@60/59.94/50/30/29.97/25/24/23.98Hz • 1080i@60/59.94/50Hz • 720p@60/59.94/50/30/29.97/25 • 625i50 (PAL) • 525i59.94 (NTSC)	INPUTS	• 16 x (3G/HD/SD)-SDI • USB for control and updates
POWER	• +12V DC • Positive Centre Pin	OUTPUTS	• HDMI Type A
DIMENSIONS	220mm x 103.7mm x 29.5mm (8.7" x 4.1" x 1.2")		

DMON-16SL: 1 to 16 Channel MultiViewer with HDMI output

DECIMATOR-QUAD

MINIATURE 3G/HD/SD-SDI QUAD-SPLIT with SD-SDI and Composite Outputs



PRODUCT FEATURES

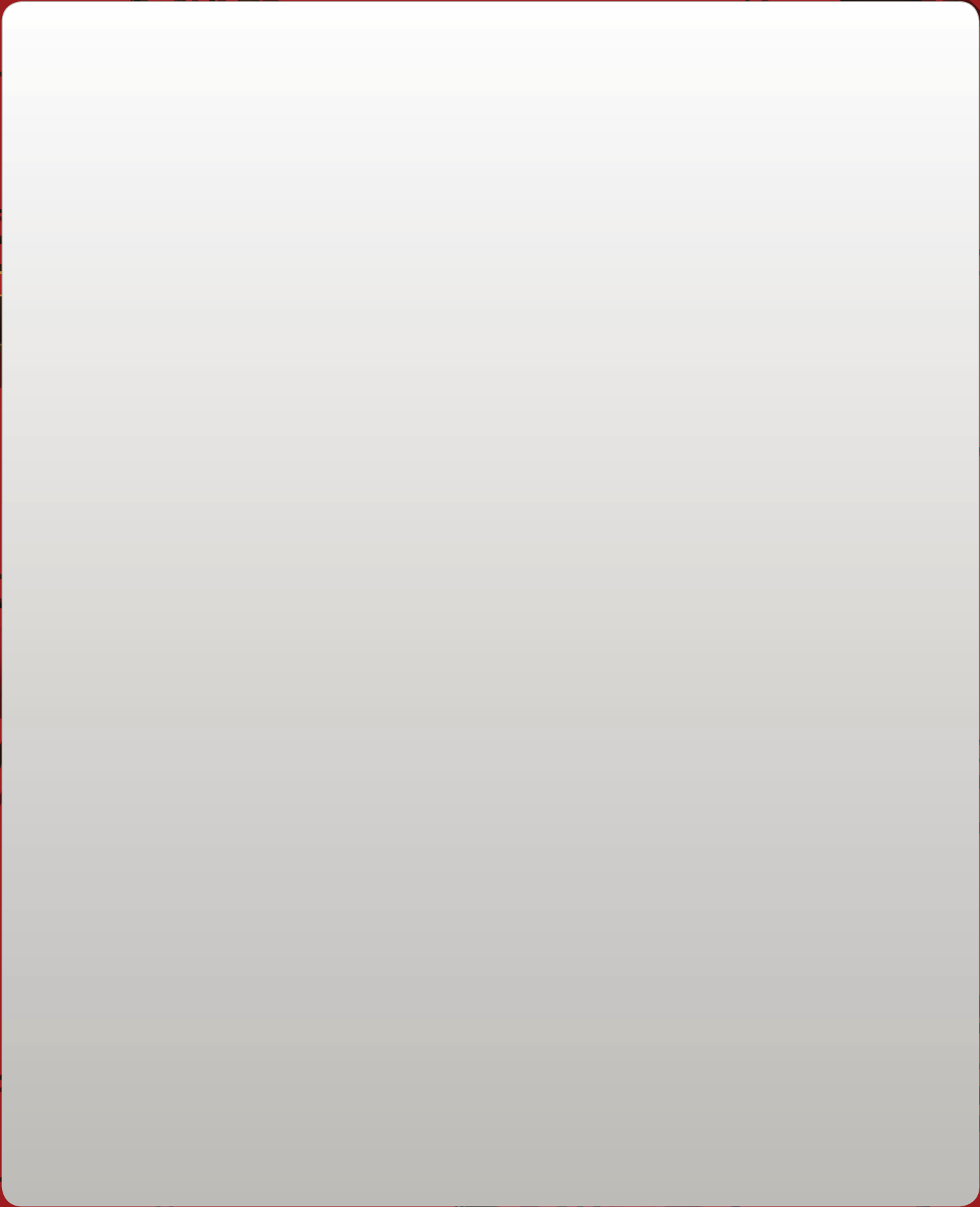
- Low cost miniature 3G/HD/SD-SDI 4 to 1 Quad Split or Down-converter with 4 to 1 input multiplexer.
- Your choice of either a NTSC or PAL output
- Linked SD-SDI and Composite outputs
- 4 x 3G/HD/SD-SDI inputs with auto detection (26 Formats supported in total)
- Each quadrant is independent of the others, allowing any 3G/HD/SD format of any frame rate to be displayed simultaneously
- Variable aspect ratios per quadrant
- All 4 inputs can be displayed simultaneously on a single output
- Full-screen mode allowing any of the 4 inputs to be selected for output
- In Full-screen mode the selected 3G/HD-SDI input is down-converted to either NTSC or PAL and a SD-SDI input is passed through untouched
- An extensive selection of user controllable functions via an easy to use rotary encoder for menu selection. LEDs and a push button can then be used for status and control
- Locking DC Power Socket
- Mounting Bracket included



SPECIFICATIONS

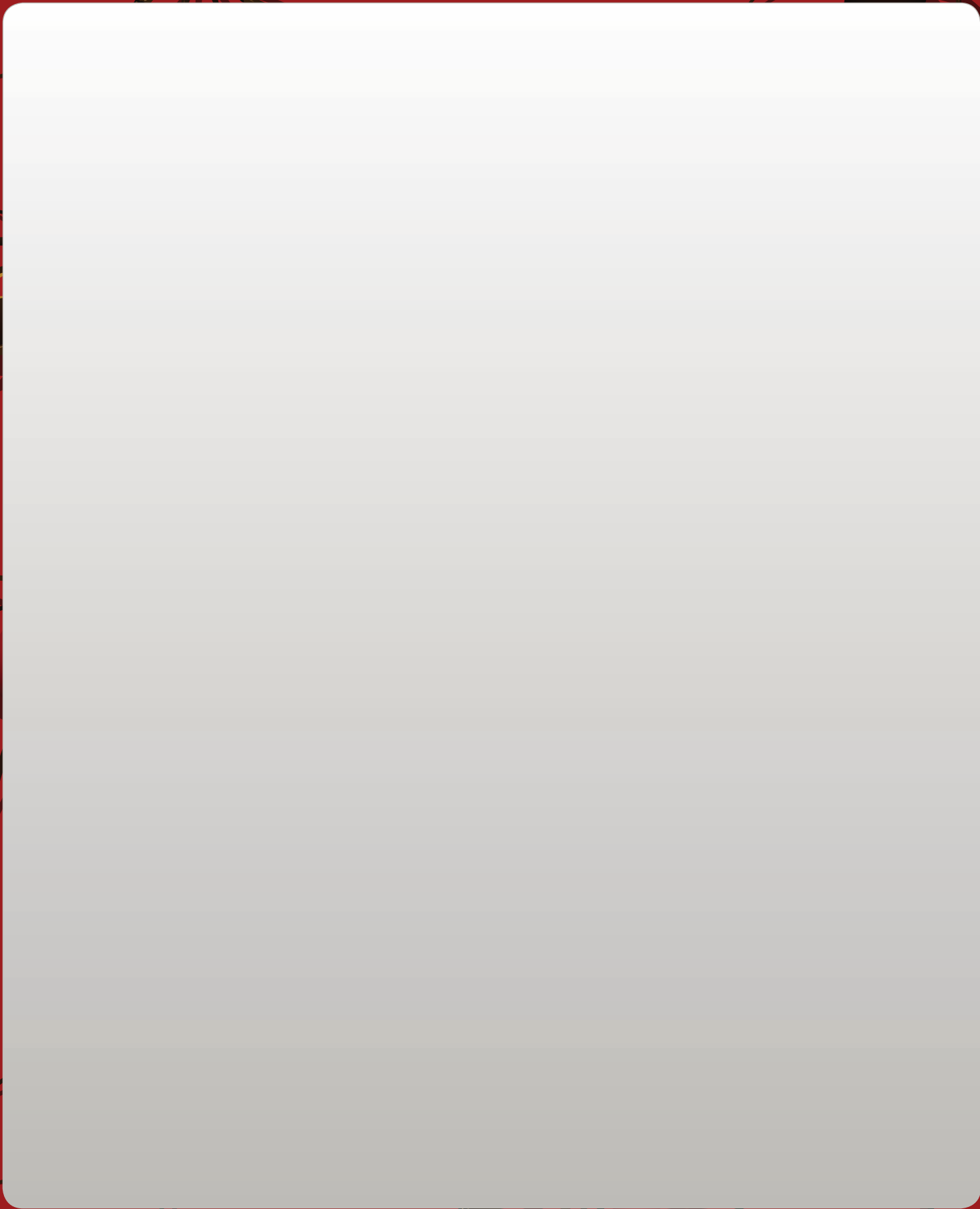
SDI INPUT FORMATS	3G-A: SMPTE 424M@2.97 and 2.967Gb/s • 1080p@60/59.94/50Hz HD:SMPTE 292M/274M/296M@1.485 and 1.435Gb/s • 1080i@60/59.94/50Hz • 1080p/psf@30/29.97/25/24/23.98Hz • 720p@60/59.94/50/30/29.97/25/24/23.98Hz SD:SMPTE 259M@270Mb/s • 625i50 (PAL) • 525i59.94 (NTSC)	MENU OPTIONS	• Input status for all 4 inputs • Output format • Full screen enable • Full screen input select • Output aspect and type of 16:9 or 4:3 at either 90 or 100% of screen size • Individual aspect format for each input of Same as output, Letter-box or Pillar-box • Border Enable • Quad split mode reference of either Free-run or input 1
INPUTS	• 4 x 3G/HD/SD-SDI with Input Equalization > 100M using Belden 1694A	OUTPUTS	• 1 x 10-bit SD-SDI Re-clocked • Composite (PAL or NTSC)
LED STATUS	• Power • 4 x Signal lock and rate	DIMENSIONS	3.7" x 3.7" x 0.9" or (94mm x 94mm x 23mm)
POWER	• +5V to +24V DC, 5 Watts • Positive Centre Pin		

QUAD-SPLIT: SD-SDI and COMPOSITE OUTPUTS



NOTES

A large, empty white rectangular area with rounded corners, intended for notes. It is centered on the page and surrounded by a red background featuring a repeating pattern of black spiders.



NOTES



APRIL 2017 PRODUCT CATALOGUE

www.decimator.com

Innovative Monitoring Solutions

Copyright © 2017 DECIMATOR DESIGN PTY LTD